

HÄFELE



www.hafeleindia.com

PROLOCK - HOTEL SOLUTIONS

The Hafele hotel lock system replaces your old room keys with Keyless Access by utilizing international-standard Mifare and keycard technology. Feel secure with an Access Control System that allows you to integrate all of your own and your guest's security needs into one stylish, energy efficient and reliable package.





A. Hotel management system map

B. Hotel lock system

1. System component
2. Specifications
3. Handle and Finish
4. Dimension
5. Article No. & Prices
6. Accessories

C. Elevator control system

1. System component
2. Function
3. Connection diagram
4. Specifications

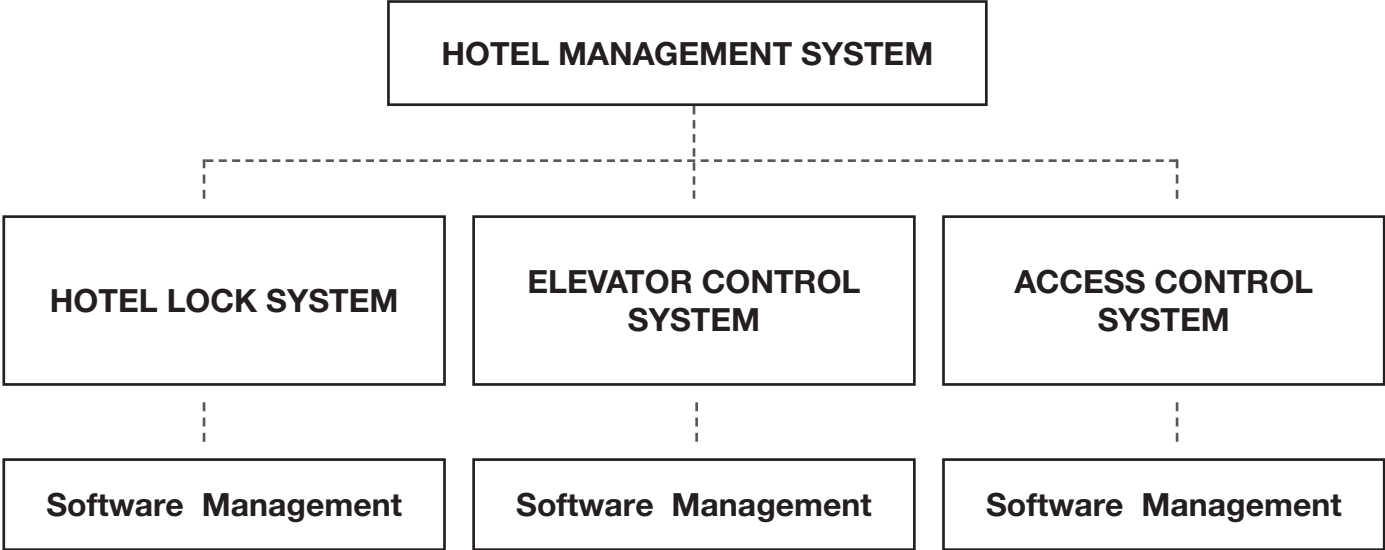
D. Access control system

1. System component
2. Function
3. Connection diagram
4. Specifications

E. Hotel management software



HOTEL MANAGEMENT SYSTEM MAP



> One hotel management system include 3 parts: hotel lock system, access control system and elevator control system. These 3 systems are managed by one software and each customer can verify for all these system by using just one check-in card.



HOTEL LOCK SYSTEM

System Component

OFFLINE SYSTEM



Hotel lock



PDA



Encoder



Card



Software

HOTEL LOCK SYSTEM

PL200



Features

- > Material: SUS 304
- > Door thickness: 40~60 mm (for 45~60 mm need additional mounting set)
- > Power supply: 4 pcs AA alkaline
- > Record storage: 830 records
- > Working temperature: 0°C - 70°C
- > Working humidity: 10% - 90%
- > Optional mechanical key

Specifications

- > 3 types of available handle: E,D,H
- > 3 types of finish: satin, gold, black matt
- > Comes with profile cylinder, can easily carry-out the master key customisation
- > Unlocking methods: MF card (13.56MHz), mechanical key and Bluetooth (Optional)
- > The alarm feature of the lock will set-off in case of low-battery or invalid card
- > Supported system: Offline and Bluetooth

Handles and Finishes

3 types of available handles



E lever handle

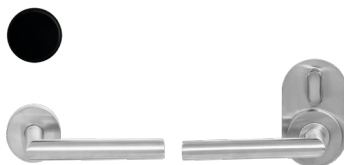


D lever handle



H lever handle

3 types of finishes



Satin



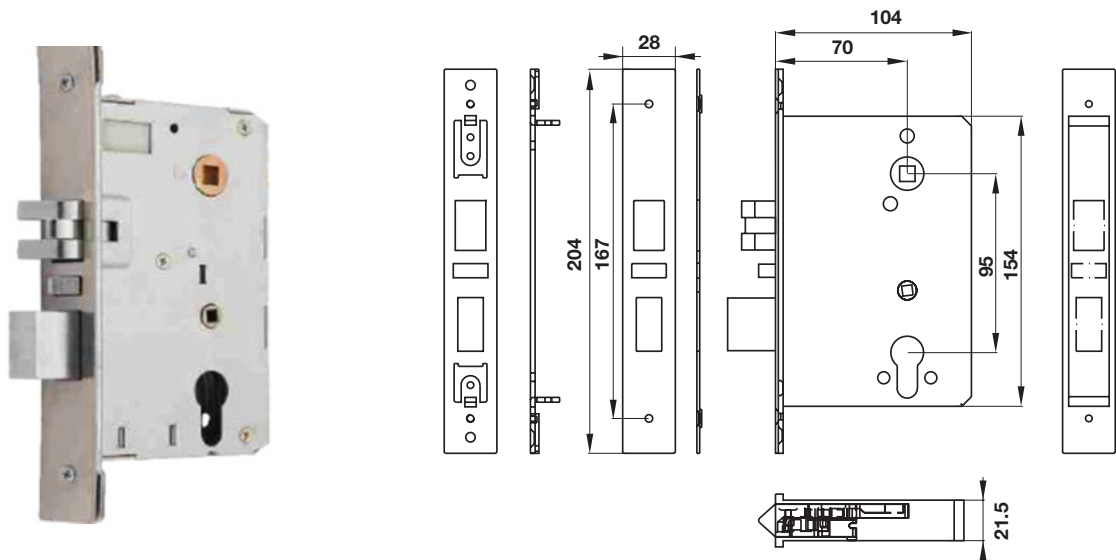
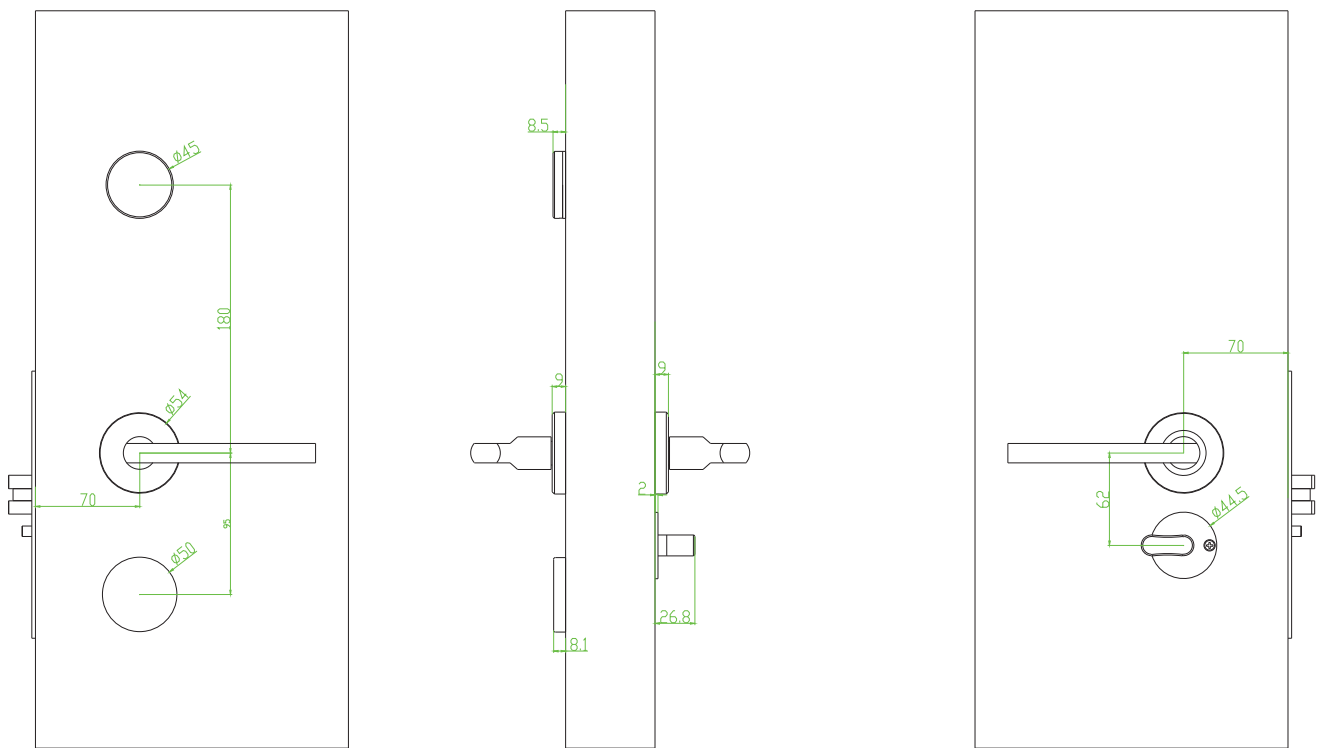
Gold



Black Matt

HOTEL LOCK SYSTEM

PL200



HOTEL LOCK SYSTEM

PL200

PL 200 - Offline and Bluetooth System					
Type	Finish	Handle	DIN	Offline Art No.	Bluetooth Art No.
PL200	Satin Finish	E Lever Handle	DINL	912.20.154	912.20.341
			DINR	912.20.155	912.20.342
		D Lever Handle	DINL	912.20.156	912.20.348
			DINR	912.20.157	912.20.349
		H Lever Handle	DINL	912.20.330	912.20.354
			DINR	912.20.331	912.20.355
	Gold Finish	E Lever Handle	DINL	912.20.162	912.20.344
			DINR	912.20.163	912.20.345
		D Lever Handle	DINL	912.20.164	912.20.350
			DINR	912.20.165	912.20.351
		H Lever Handle	DINL	912.20.332	912.20.356
			DINR	912.20.332	912.20.357
	Black Matt Finish	E Lever Handle	DINL	912.20.170	912.20.346
			DINR	912.20.171	912.20.347
		D Lever Handle	DINL	912.20.172	912.20.352
			DINR	912.20.173	912.20.353
		H Lever Handle	DINL	912.20.334	912.20.358
			DINR	912.20.335	912.20.359

PL 200 - Euro Profile Cylinders and Accessories				
Type	Product Description	Finish	Material	Art No.
PL Series	Half Cylinder with 2 Keys - Keyed to Differ	Nature	Brass	916.88.900
	Half Cylinder with Keys as per customer requirement - Keyed Alike	Nature	Brass	916.88.901
	Guest Keycard Plain White - Mifare	White	Plastic	912.20.013

HOTEL LOCK SYSTEM

PL50



Features

- > Material: SUS 304
- > Door thickness: 40~60 mm (for 45~60 mm need additional mounting set)
- > Power supply: 4 pcs AA alkaline
- > Record storage: 830 records
- > Working temperature: 0°C - 70°C
- > Working humidity: 10% - 90%
- > Optional mechanical key

Specifications

- > 4 types of available handle: E ,D, H & K
- > 3 types of finish: satin, gold, black matt
- > Comes with profile cylinder, can easily carry-out the master key customisation
- > Unlocking methods: MF card (13.56MHz), mechanical key and Bluetooth (Optional)
- > The alarm feature of the lock will set-off in case of low-battery or invalid card
- > Supported system: Offline and Bluetooth

Handles and Finishes

4 types of available handles



E lever handle



D lever handle



H lever handle



K lever handle

3 types of finishes



Satin



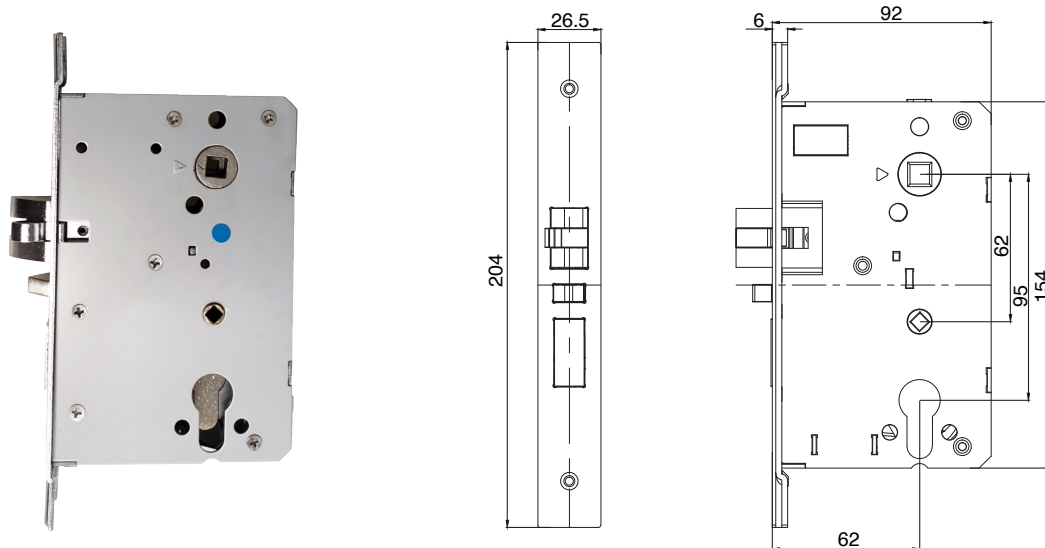
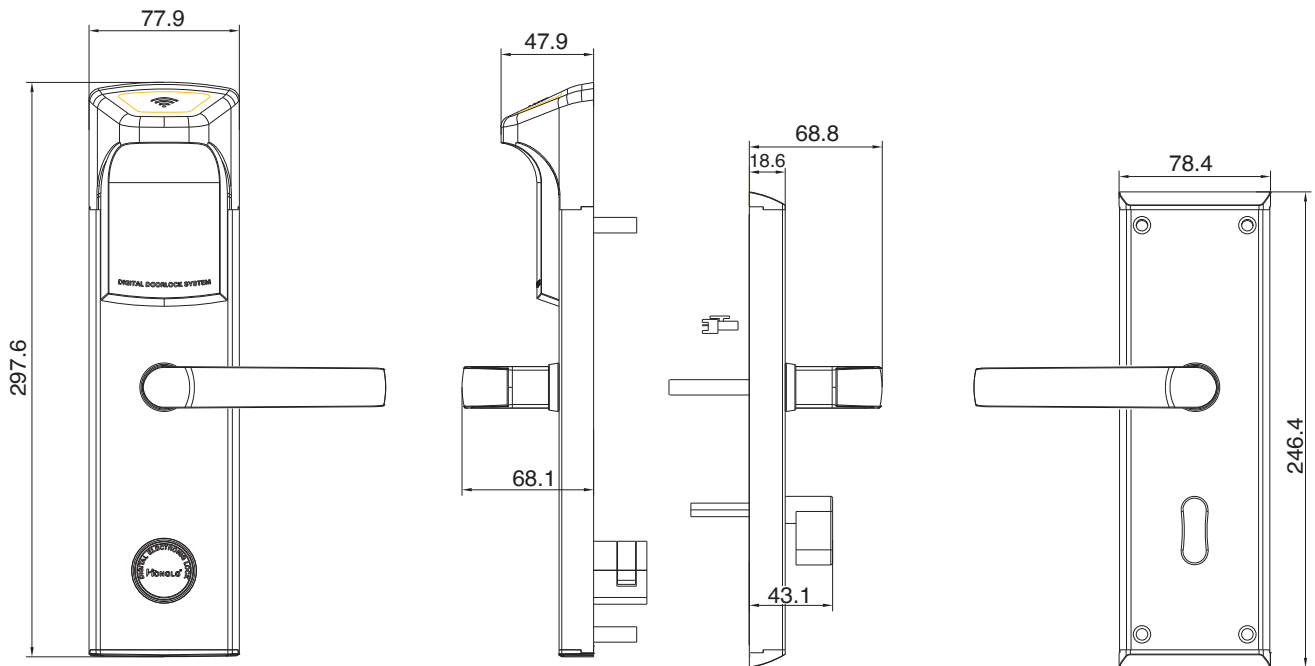
Gold



Black Matt

HOTEL LOCK SYSTEM

PL50



HOTEL LOCK SYSTEM

PL50

PL 50 - Offline and Bluetooth System						
Type	Finish	Handle	DIN	Offline	Bluetooth	
PL50	Satin Finish	E Lever Handle	DINL	912.20.410	912.20.434	
			DINR	912.20.411	912.20.435	
		D Lever Handle	DINL	912.20.416	912.20.440	
			DINR	912.20.417	912.20.441	
		H Lever Handle	DINL	912.20.422	912.20.446	
			DINR	912.20.423	912.20.447	
		K Lever Handle	DINL	912.20.428	912.20.452	
			DINR	912.20.429	912.20.453	
		Gold Finish	E Lever Handle	DINL	912.20.412	912.20.436
				DINR	912.20.413	912.20.437
			D Lever Handle	DINL	912.20.418	912.20.442
				DINR	912.20.419	912.20.443
	H Lever Handle		DINL	912.20.424	912.20.448	
			DINR	912.20.425	912.20.449	
	K Lever Handle		DINL	912.20.430	912.20.454	
			DINR	912.20.431	912.20.455	
	Black Matt	E Lever Handle	DINL	912.20.414	912.20.438	
			DINR	912.20.415	912.20.439	
		D Lever Handle	DINL	912.20.420	912.20.444	
			DINR	912.20.421	912.20.445	
		H Lever Handle	DINL	912.20.426	912.20.450	
			DINR	912.20.427	912.20.451	
		K Lever Handle	DINL	912.20.432	912.20.456	
			DINR	912.20.433	912.20.457	

PL 50 - Euro Profile Cylinders and Accessories				
Type	Product Description	Finish	Material	Art No.
PL Series	Half Cylinder with 2 Keys - Keyed to Differ	Nature	Brass	916.88.900
	Half Cylinder with Keys as per customer requirement - Keyed Alike	Nature	Brass	916.88.901
	Guest Keycard Plain White - Mifare	White	Plastic	912.20.013

ACCESSORIES

ENCODER



Features

- > Indicator light: yes
- > Material: metal compact
- > Dimension: 130 x 76 x 25 mm
- > Connection interface: USB port
- > Power: via USB port
- > Working temperature: 0°C - 50°C
- > Working humidity: 10%-70%
- > Programming Guest Check-in Cards and Staff Cards

Art.No.

912.20.006

PDA



Features

- > Connection interface: USB port
- > Dimension: 140 x 80 x 30 mm
- > Display size: 80*65 mm touch screen
- > Power: 4 AAA batteries
- > Record storage:2000 records
- > Working temperature: 0°C - 50°C
- > Working humidity: 10%-70%
- > Transfer data from software to hardware such as: hotel lock, elevator controller and access controller.
- > Retrieve Access Record Logs

Art.No.

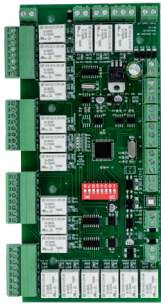
912.20.007

ELEVATOR CONTROL SYSTEM



ELEVATOR CONTROL SYSTEM

System component



Elevator Controller



Reader



Encoder



PDA



Card



Software

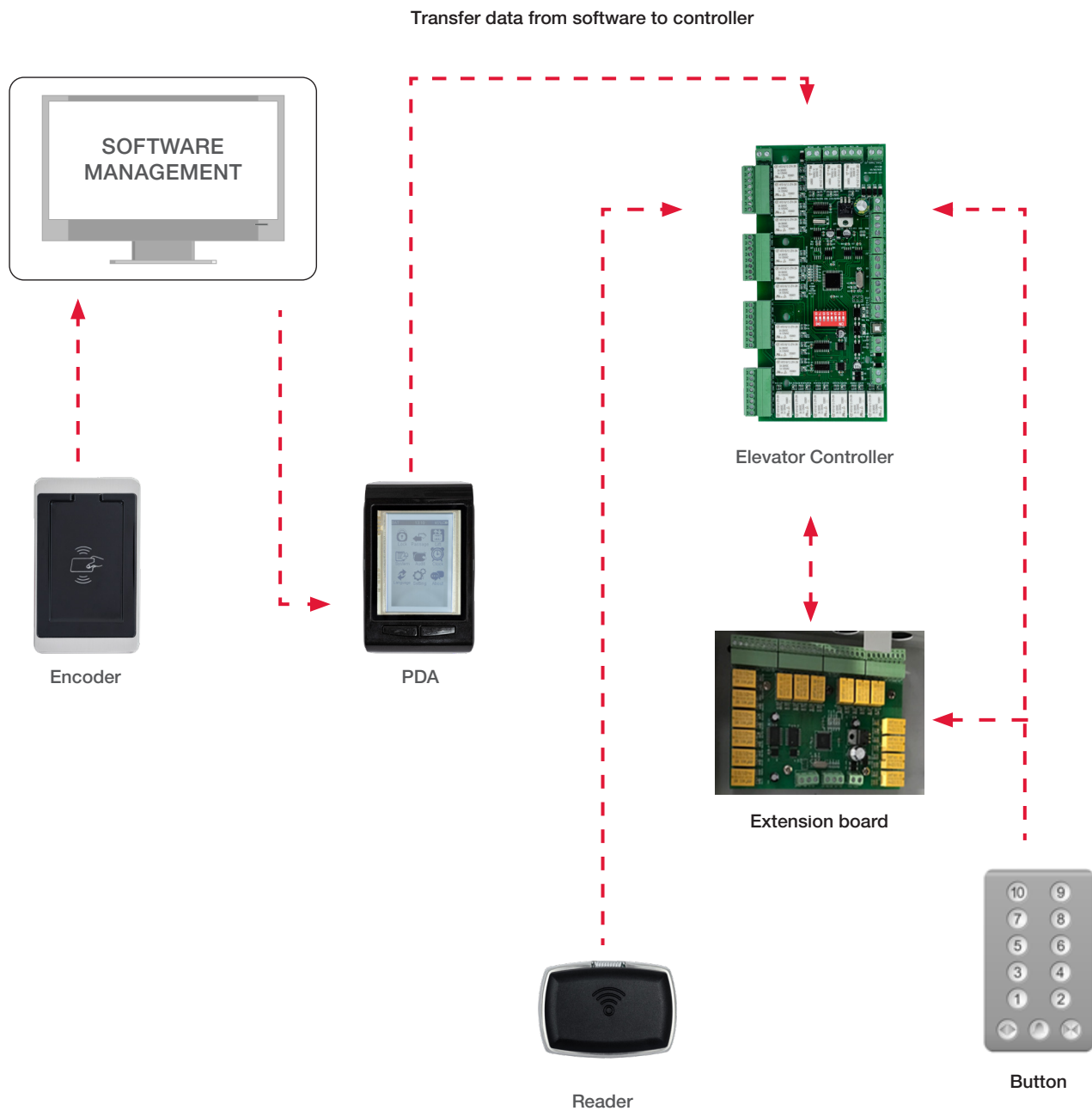
Function

- > Manage and grant specific guest/ admin access:
 - By floor: private and public floor
 - By time range within the day
 - By day of week (weekends/workday)



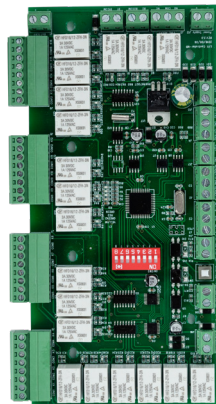
ELEVATOR CONTROL SYSTEM

Connection diagram



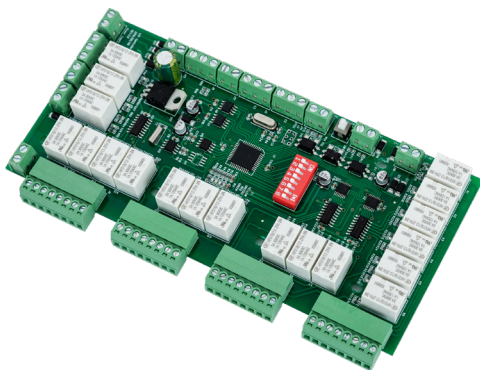
ELEVATOR CONTROL SYSTEM

ELEVATOR CONTROLLER WITH 1 READER



Features

- > Floor control: 16 floors
- > Types of reader: RS485 reader
- > Types of card: MF - 13.56MHz
- > Lithium battery keeps memory and time setting for 5 years
- > Data retention during power cut-off - Upto 90 days
- > Power: DC12V - 400mA - 50W
- > Temperature: 0°C - 70°C
- > Humidity: 10 - 90%
- > In case of Emergency, Elevator control system will automatically turn-off



Art.No.

912.20.009

ELEVATOR CONTROL SYSTEM

ADDITIONAL READER



Features

- > Types of card: Mifare - 13.56MHz
- > Power: DC12V - 400mA - 50W
- > Temperature: 0°C - 70°C
- > Humidity: 10-90%

Art.No.

912.20.025

EXTENSION BOARD



Features

- > Floor control: 16 floors
- > Connect with elevator controller: maximum 7 boards
- > Lithium battery keeps memory and time setting for 5 years
- > Data retention during power cut-off - Upto 90 days
- > Power: DC12V - 400mA - 50W
- > Temperature: 0°C - 70°C
- > Humidity: 10 - 90%

Art.No.

912.20.087

ACCESS CONTROL SYSTEM

System component



Access Controller



Electric lock



Encoder



Exit button



PDA



Card



Software

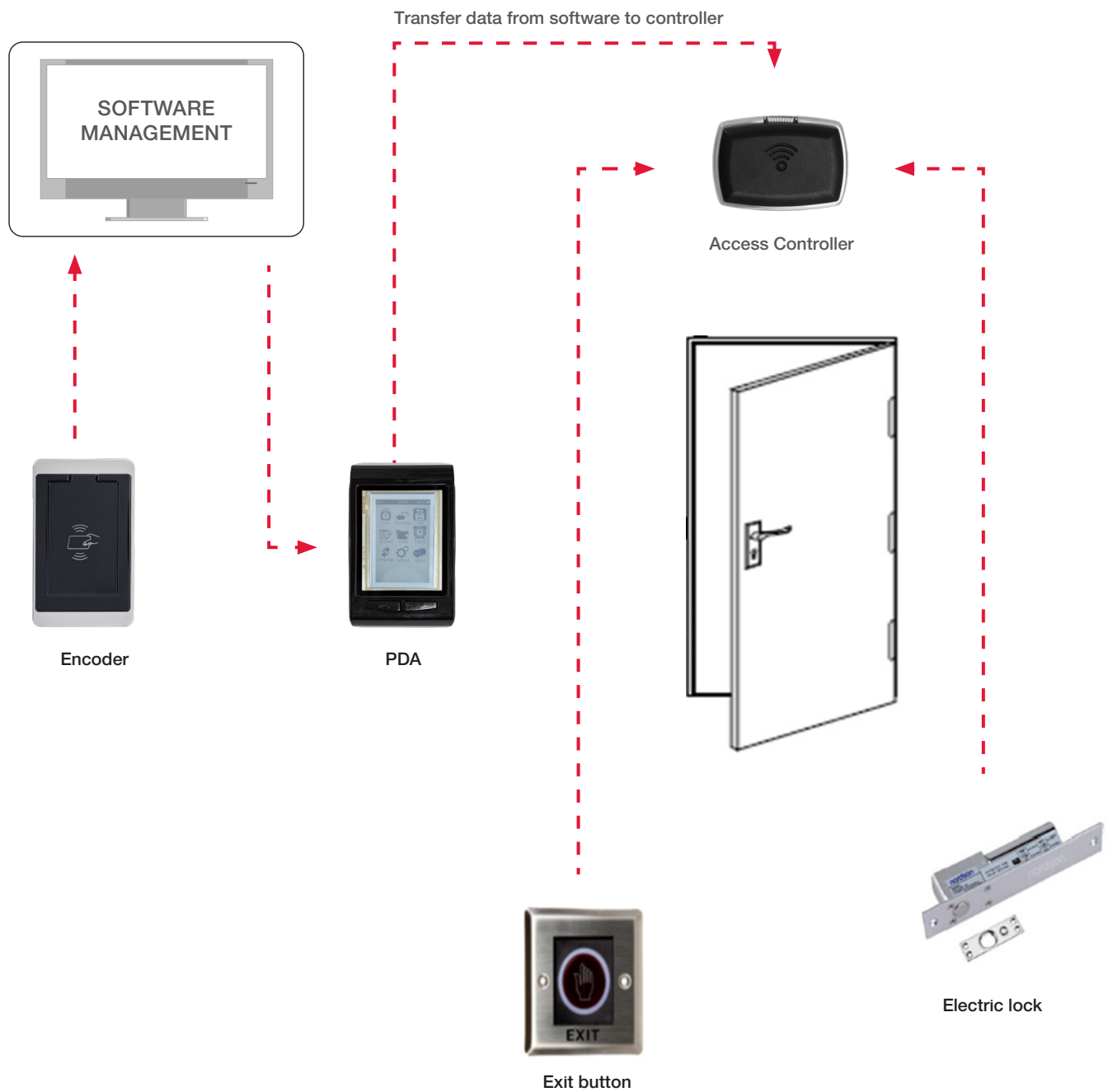
Function

- > Manage and grant guest/ admin access:
 - By door: Common access areas like spa/ gym/ swimming area
 - By time range within the day
 - By day of week (weekends/workday)



ACCESS CONTROL SYSTEM

Connection diagram



ACCESS CONTROL SYSTEM

ACCESS CONTROL SYSTEM

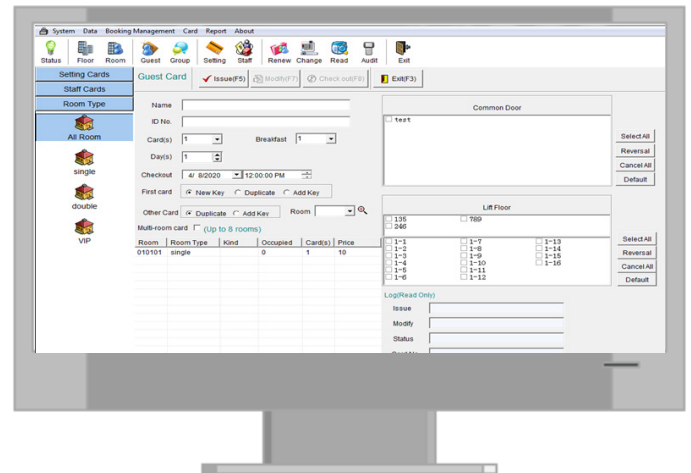
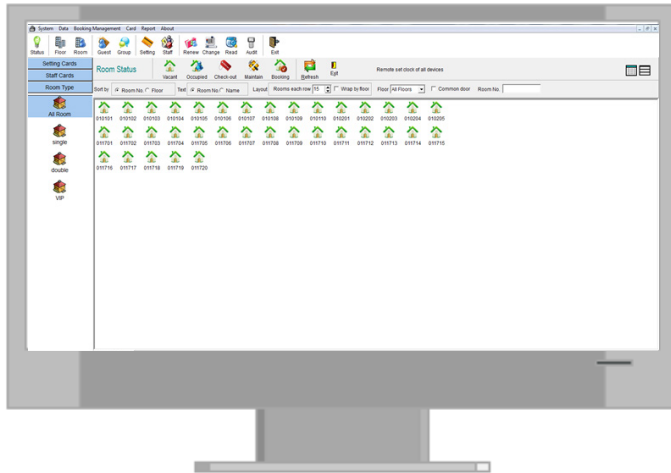
**Features**

- > Door control: 1 door
- > Types of card: MF - 13.56MHz
- > Power: DC12V - 400mA - 50W
- > Temperature: 0°C - 70°C
- > Humidity: 10 - 90%
- > In case of emergency, Access Control System will automatically turn-off

Art.No.

912.20.012

HOTEL MANAGEMENT SOFTWARE



- All-in-one software, hotel lock system, elevator control system and access control system
- Manage unlimited rooms, elevator, door control device
- Set up access rights for guest follow the time zone & duration of stay
- Family function: one check-in card cans open for 8 rooms)
- Compatible with standard Mifare card 13.56Mhz
- Easily integrated with PMS system
- User-friendly software UI

**Mumbai Design Centre:**

Haji Moosa Patrawala Ind.(SOBO)
Estate, Near Famous Studio,
Mahalaxmi (West), Mumbai - 400 011
Tel.: 022 6264 7100.

Mumbai Design Centre:

#2 Filix Building, Opp. Asian Paints,
L.B.S. Marg, Bhandup (West),
Mumbai - 400 078
Tel.: 022 2596 9660/
2596 9787/2594 7305

New Delhi Office & Design Centre:

D-89 , 1st Floor, Okhla Phase-I,
New Delhi - 110 020
Tel.: 011-66574999
Fax: 011-41605482

Bangalore Office & Design Centre:

Incubex Nestavera Spaces Pvt Ltd,
No:13, Langford Place, Langford Road,
Shanti Nagar, Bangalore - 560 025
Tel.: 080 4132 6116
Fax: 080 4132 6226

Bangalore**Hafele Appliances Gallery:**

No. 2/1, Shiv Manor, Langford Road,
Shantinagar, Bangalore - 560027
Tel.: 080 - 4142 6336

Sri Lanka:**Hafele Office and Design Centre:**

52, Nandana Gardens
(On Duplication Road), Colombo 04.
Tel: +94 112 500 501.
Fax: 0094 112 500 553.

Hafele Design Centre:

448, Galle Road, Rawathawatta,
Moratuwa, Sri Lanka.
Tel.: +94 112 644 600.

Hafele Boutique:

747A, Sirimawo Bandaranayaka
Mawatha, Mulgampola,
Kandy, Sri Lanka.
Tel.: +94 812 223 338.

Hyderabad Office & Design Centre:

SJR Building - # 1-57/89/1 & 1-57/89/2
Opp Allahabad Bank, Gachibowli,
Hyderabad – 500032
Tel.: 040 29557578 / 040 29557588

Kolkata Design Centre:

PS PACE, Premises No. 1/1A,
Mahendra Roy Lane, Topsia,
Kolkata - 700 046
Tel.: 033 40086814 / 033 40089268
Fax: 033 24988020

Kolkata Office:

Office No. 1001, PS Continental,
10th Floor, 83/2/1 Topsia Road,
Near Vishwakarma Building.
South Kolkata - 700046
Tel: 033-2285 0104 /
033-2285 0105 / 033-2285 0106

Chennai Office & Design Centre:

1st Floor No.24, College Road,
Nungambakkam, Chennai - 600 006
Tel.: 044 - 4215 1542
Fax: 044 2446 0922

Bangladesh Office:

2nd Floor, House - 181, Road - 2,
Mohakhali DOHS, Dhaka - 1206.
Tel.: 01844018431/ 01844018432/
01844018433/ 01844018437.

Bangladesh Design Center:

House - 106, Road - 12,
Block - E, Banani, Dhaka - 1213
Phone - 02-48810380-81

Nepal:

Monika Home Decor
Kathmandu Plaza, Kamalldhi,
Kathmandu, Nepal
Tel.: 00 9851 030 556 /
00 977 9818496082 / 9851030556

Pune Design Centre:

Showroom No. 2, Ground Floor,
F P no. 403, A/2, ICC Trade Tower,
Senapati Bapat Marg,
Shivaji Nagar, Pune -411016
Tel.: 020 2563 3301
Fax: 020 2563 3302

Pune Office:

Office No. 12, Vastushree Complex,
Survey No.587,
Near Hyde Park, Gultekdi,
Market Yard, Pune - 411 037
Tel.: 020 2426 6264
Fax: 020 2426 6274

Ahmedabad Office:

Hafele India Pvt. Ltd., Office No. 302,
3rd Floor, Shangrila Arcade, Near
Shyamal Cross Road, Satellite,
Ahmedabad - 380015
Tel.: +91 79695 55505 / 8866220505

Cochin Office:

Jomer Symphony, 5th Floor, 48/1744
C34, Chalikkavattom, North Ponnuranni,
Vytila, Cochin- 682010

Bhutan:

SMART HOMES
Gr. Floor, Druk Building (Opp Helipad)
Babesa -Thimpu Expressway, Thimpu
Tel.: +975-2-333419
Mobile: +975-77277615, 17839717,
77114228,1760063,17669840

HÄFELE

Mumbai Corporate Office:
Office No. 3, Building "A", BETA,
I Think Techno Campus, Off J.V.L.R,
Opp. Kanjurmarg East, Mumbai – 400 042.
Tel.: 022 6142 6100 | Fax: 022 6702 0531.

For Enquiries SMS "HAFELE" to 56070
Toll Free Customer Care: 1800 266 6667
Customer Care WhatsApp: +91 97691 11122
customer care@hafeleindia.com
info@hafeleindia.com

Follow us on

