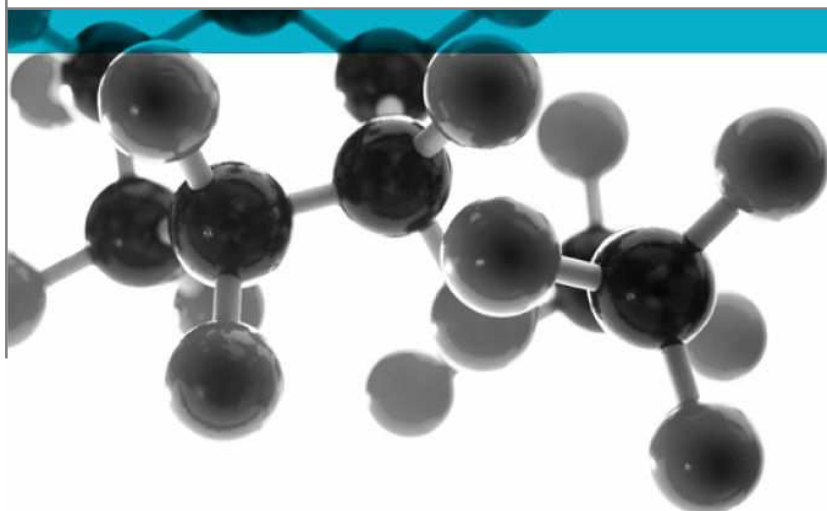


Exova Warringtonfire
Key Industrial Park
Fernside Road
Willenhall
West Midlands
WV13 3YA

T : +44 (0) 1902 722 122
F : +44 (0) 1902 727 242
E : willenhall@exova.com
W : www.exova.com



BS EN 1906:2012



ASSESSMENT OF SPRUNG LEVER HANDLES

A Report To: Hafele GMBH & Co KG
Postfach 1237
D-72192
Nagold
Germany

Date: 20/11/2013

Copy: Final

Issue No.: 4

Page 1

Document Reference: WIL319902 B Ass

Testing
Advising
Assuring



ASSESSMENT CONCLUSIONS

Samples of: Sprung Lever Furniture

Manufacturer HAFELE GMBH + CO KG

Product : Sprung Lever Furniture

Models Models : (EHK-HLO1) 903.91.358, 903.92.358, 903.93.358, 903.91.359, 903.92.359, 903.93.359

903.91.556, 903.92.556, 903.93.556, 903.91.557, 903.92.557, 903.93.557
 903.91.179, 903.92.179, 903.93.179, 903.91.180, 903.92.180, 903.93.180
 (EHK-HL02) 903.91.116, 903.92.116, 903.93.116, 903.91.117, 903.92.117, 903.93.117
 903.91.566, 903.92.566, 903.93.566, 903.91.567, 903.92.567, 903.93.567
 903.91.238, 903.92.238, 903.93.238, 903.91.239, 903.92.239, 903.93.239
 (EHK-HL03) 903.91.177, 903.92.177, 903.93.177, 903.91.178, 903.92.178, 903.93.178
 903.91.576, 903.92.576, 903.93.576, 903.91.577, 903.92.577, 903.93.577
 903.91.314, 903.92.314, 903.93.314, 903.91.315, 903.92.315, 903.93.315
 (EHK-HL07) 903.91.195, 903.92.195, 903.93.195, 903.91.196, 903.92.196, 903.93.196
 903.91.616, 903.92.616, 903.93.616, 903.91.617, 903.92.617, 903.93.617
 903.91.456, 903.92.456, 903.93.456, 903.91.457, 903.92.457, 903.93.457
 (EHK-HLO9) 903.91.197, 903.92.197, 903.93.197, 903.91.198, 903.92.198, 903.93.198
 903.91.636, 903.92.636, 903.93.636, 903.91.637, 903.92.637, 903.93.637
 903.91.466, 903.92.466, 903.93.466, 903.91.467, 903.92.467, 903.93.467
 (EHK-HL10) 903.91.233, 903.92.233, 903.93.233, 903.91.234, 903.92.234, 903.93.234
 903.91.646, 903.92.646, 903.93.646, 903.91.474, 903.92.474, 903.93.474
 903.91.475, 903.92.475, 903.93.475
 (EHK-HL11) 903.91.235, 903.92.235, 903.93.235, 903.91.236, 903.92.236, 903.93.236
 903.91.656, 903.92.656, 903.93.656, 903.91.657, 903.92.657, 903.93.657
 903.91.476, 903.92.476, 903.93.476, 903.91.477, 903.92.477, 903.93.477
 (EHK-HL13) 903.91.292, 903.92.292, 903.93.292, 903.91.293, 903.92.293, 903.93.293
 903.91.676, 903.92.676, 903.93.676, 903.91.677, 903.92.677, 903.93.677
 903.91.492, 903.92.492, 903.93.492, 903.91.493, 903.92.493, 903.93.493
 (EHK-HL15) 903.91.296, 903.92.296, 903.93.296, 903.91.297, 903.92.297, 903.93.297
 903.91.696, 903.92.696, 903.93.696, 903.91.697, 903.92.697, 903.93.697
 903.91.496, 903.92.496, 903.93.496, 903.91.497, 903.92.497, 903.93.497
 (EHK-HL17) 903.70.040, 903.70.041, 903.70.120, 903.70.121, 903.70.124, 903.70.125
 (EHK-HL18) 903.70.042, 903.70.043, 903.70.126, 903.70.127, 903.70.122, 903.70.123

have been tested in accordance with:

BS EN 1906:2010 (Building Hardware – Lever Handles and Knob Furniture)

By Exova Warringtonfire [A UKAS accredited Testing Laboratory (No. 0621) and EC Notified Body number 1104]

At Key Industrial Park, Fernside Rd., Willenhall. West Midlands. WV13 3YA.

Results and comments as detailed below:

All results contained in this assessment report were taken from report number WIL319902 B

Document No.: WIL319902 B Ass

Page No.: 2 of 16

Author: A Fairfield

Issue Date: 20/11/2013

Client: Hafele GMBH & Co KG

Issue No.: 4



Clause No.	Description	Compliance
5	Requirements at Grade 2	
5.2	Check of Spindle and Fastening Elements	No
5.5	Free play	Yes
5.5.2	Safety requirements	Yes
5.6	Free angular movement or misalignment	Yes
5.7	Torque of return mechanism	Yes
5.8	Durability of mechanism	Yes
5.9	Repeat of Axial strength of lock furniture and fixing	Yes
5.10	Repeat of Free play measurement	Yes
5.11	Repeat of Free angular movement or misalignment	Yes
5.12	Repeat of Torque of return mechanism	Yes
5.13	Axial strength for safety furniture(optional)	NT
5.3	Rotational Torque strength	Yes
5.14	Corrosion Resistance	Yes
8	Marking	No
C.2	Requirements for lock furniture for use on fire doors	Yes

No inferences can be made regarding performance against other requirements of this standard

Tests marked "NA" are not applicable to the type of device under test.
 Tests marked "NT" cannot be applied to the type of device under test

Document No.: WIL319902 B Ass
 Author: A Fairfield

Page No.: 3 of 16
 Issue Date: 20/11/2013

Client: Hafele GMBH & Co KG

Issue No.: 4



AUTHORISATION

Assessment performed by: Alan Fairfield – Test Engineer
Report issued by: Alan Fairfield – Test Engineer Signed <i>Alan Fairfield</i> Date 20 th August 2013 For and on behalf of Exova Warringtonfire
Report authorised by: Ian Keeling – Business Unit Manager Signed <i>Ian Keeling</i> Date 20 th August 2013 For and on behalf of Exova Warringtonfire
Report issued: 20th August 2013



0621

NOTE.
Tests marked "Not UKAS Accredited" are not covered by the Laboratory UKAS accreditation schedule.

Tests marked NT were not tested

Tests marked NA are not applicable to the product on test.

The laboratory has tested the product supplied by the client as sampled in accordance with their own requirements

Exova Warringtonfire is an EC Notified Body Number 1104

This report shall not be reproduced except in full, (and then only as permitted by copyright laws), without written approval from Exova Warringtonfire

Document No.: WIL319902 B Ass Page No.: 4 of 16
 Author: A Fairfield Issue Date: 20/11/2013

Client: Hafele GMBH & Co KG Issue No.: 4



0621

Annex C Suitable for Use on fire door assemblies:

Tested in a door assembly which satisfies criteria of EN 1634 – 1

Test report No.195595 iss 3

Dated 23/07/2010

Result – Details

Suitability of this product for use on fire doors is verified in fire test report number 195595 iss 3.

Classification achieved.

Category of use	Durability	Door mass	Fire resistance	Safety	Corrosion resistance	Security	Type of operation
1 - 4	6 or 7	--	0, A,B,C,D	0 or 1	0 - 4	0 - 4	A, B, or U
2	6	-	B	0	3	0	B

Clause 8 marking

Product and or literature, packing etc Should be marked with:

Manufacturer's name or Trade mark. HAFELE

Product model identification 903.92.117

Classification according to clause 4 No

Standard number No

Document No.: WIL319902 B Ass
 Author: A Fairfield

Page No.: 15 of 16
 Issue Date: 20/11/2013

Client: Hafele GMBH & Co KG

Issue No.: 4



The year and week of manufacture – may be in coded form No

UNCERTAINTY OF MEASUREMENT

Clause 6.1 of the standard specifies the following tolerances on values:

MASS IN KG ± 2% LENGTH IN MM ± 2%
Force in N ± 2% Torque in Nm ± 2% time in secs ± 5%

The uncertainty of measurements calculated for a confidence level of 95% throughout these tests are within the limits of these tolerances.

OBSERVATIONS AND COMMENTS

(include details of all opinions and interpretations given in this report)

All results contained in this report were assessed from report number WIL319902 B, Which is based on testing the 903.02.117 model, which in our opinion is the most onerous model in the range. It is therefore our opinion that these results are also valid for the models contained in this report.

The samples supplied successfully passed all mechanical testing that was undertaken with no visible problems.

The samples supplied failed the clause 5.2 as no door thicknesses were stated.

The samples also failed the marking requirements of clause 8 as the classification code, and the number of this standard were not shown

- END OF REPORT -

Revision History

Issue No :	Re - Issue Date :
Revised By:	Approved By:
Reason for Revision:	

Issue No :	Re - Issue Date :
Revised By:	Approved By:
Reason for Revision:	

Document No.: WIL319902 B Ass Page No.: 16 of 16
Author: A Fairfield Issue Date: 20/11/2013

Client: Hafele GMBH & Co KG Issue No.: 4

