



HAFELE

Maximising
the value of space.
Together.



STAINLESS STEEL SINKS



ARGENTO

Handmade Kitchen Sinks

Machines are known for their precision and speed, but the human touch brings an aspect of quality, sophistication and attentiveness to any task. It is this extra consideration that comes through in Häfele's Range of Handmade Argento Kitchen Sinks. Every sink from this range is a product of meticulous guidance, crafted through the process of manual welding. They come in various sizes and configurations to meet individual requirements and design preferences of every user.

All Argento sinks are made of Stainless Steel Grade 304 which by virtue grants them extraordinary durability and unbeatable performance, and lowers the chances of corrosion and rusting. This along with the Asphalt coating of the sink base adds an extra layer of protection and prevents any condensation and corrosion. The inherent aseptic property of Stainless Steel makes the surface of the sinks hygienic and easy to clean after the many varied chores of the day.

These sinks come with extra deep bowls to accommodate even large vessels comfortably. Accomplishing tasks at the sink is also quieter, thanks to the sound suppression pads that absorb noise caused by utensils during the process of washing them. With an elegant European Satin Finish, the sinks blend in seamlessly with the overall aesthetics of your kitchen and come with a warranty of 10 years.





FEATURES



Finish: All Argento sinks come with a uniform European Satin Finish that aesthetically enhances the elegant design of the sink bowl.



Steel Thickness: These sinks are made of Stainless Steel grade 304 with a thickness of 1.2 mm. SS Grade 304 contains 18% Chrome and 8% Nickel which increases the resistance of the material to corrosion and rusting; providing extraordinary durability and unbeatable performance.



Coating: To avoid sound, the undercoat is extremely important for any Stainless Steel sink. The sinks from this range are coated to about 0.5 – 0.8 mm thickness with Asphalt - a material which absorbs sound and protects the base of the sink from condensation and corrosion.



Sound Deadening Pad: In addition to the Asphalt coating, a special sound suppression pad of 2mm thickness is integrated into the Argento sinks to absorb excessive noise of the utensils while washing.



Drain Kit: These sinks come with a drain kit which is especially designed to prevent clogging and ensure easy cleaning.



Overflow Hole: Argento Sinks also have a overflow hole that prevents accumulation of water or overflowing onto the kitchen countertop and the floor during washing and cleaning tasks.



Easy to Clean: The inherent aseptic property of stainless steel makes the maintenance of the sinks virtually effortless. They are hygienic and easy to clean.



Extra Deep Bowl: The Argento Sinks come with extra deep bowls making it sufficiently easy to accommodate large and heavy-duty vessels for cleaning.



10 Year Warranty: All ARGENTO sinks are guaranteed for 10 years* against faulty workmanship and material. T&C Apply

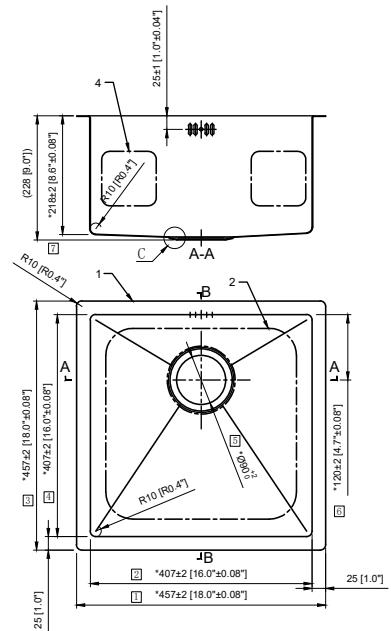


TOPAZ R 1818 - SINGLE BOWL



567.24.237

- > Overall Size mm (inch): 457x457 (18" X 18")
- > Bowl Size mm (inch): 407x407 (16" X 16")
- > Depth mm (inch): 228 (9")

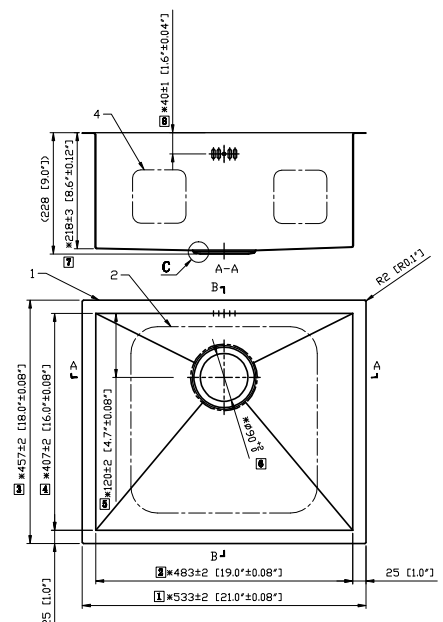


TOPAZ S 2118- SINGLE BOWL



567.24.257

- > Overall Size mm (inch): 533x457 (21" X 18")
- > Bowl Size mm (inch): 483x407 (19" X 16")
- > Depth mm (inch): 228 (9")



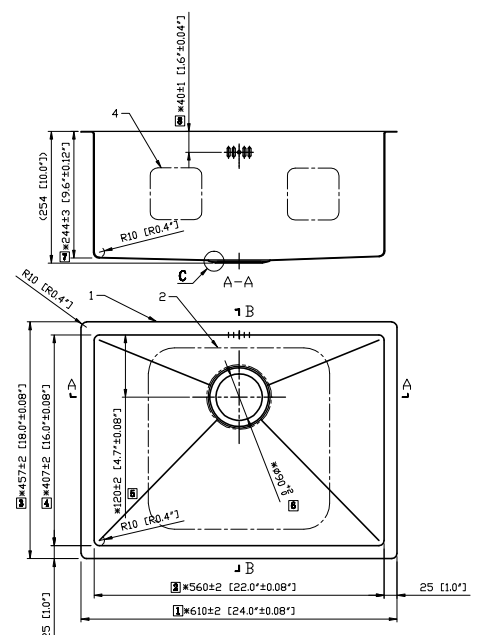


TOPAZ R 2418D - SINGLE BOWL



567.24.217

- > Overall Size mm (inch): 610x457 (24" X 18")
- > Bowl Size mm (inch): 560x407 (22" X 16")
- > Depth mm (inch): 254 (10")

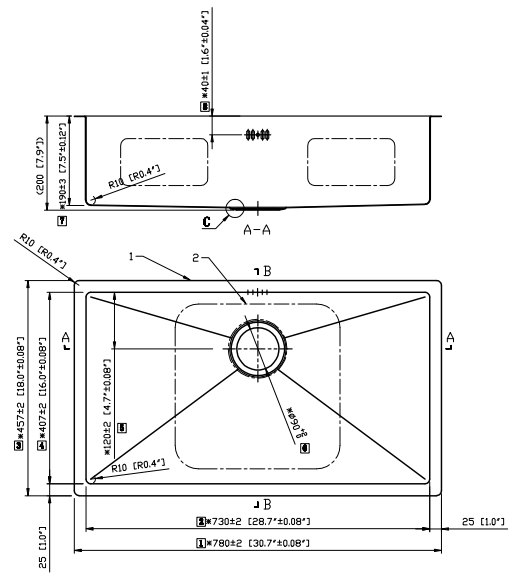


TOPAZ R 3118 - SINGLE BOWL



567.24.207

- > Overall Size mm (inch): 780x457 (31" X 18")
- > Bowl Size mm (inch): 730x407 (29" X 16")
- > Depth mm (inch): 200 (8")



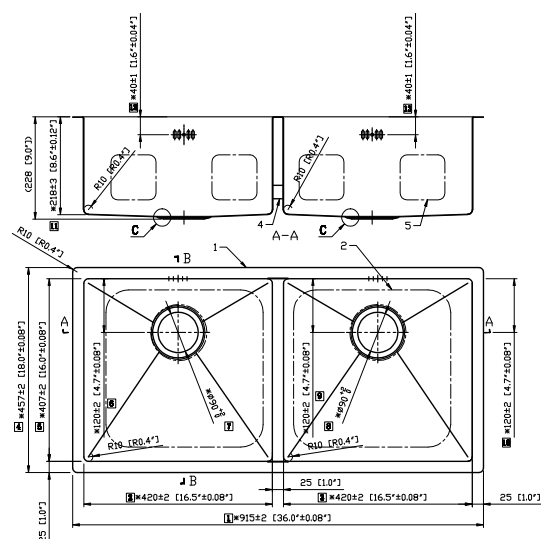


SAPPHIRE R3618 - DOUBLE BOWL



567.24.327

- > Overall Size mm (inch): 915x457 (36" X 18")
- > Bowl Size mm (inch): 420x407 (17" X 16") each
- > Depth mm (inch): 228 (9")

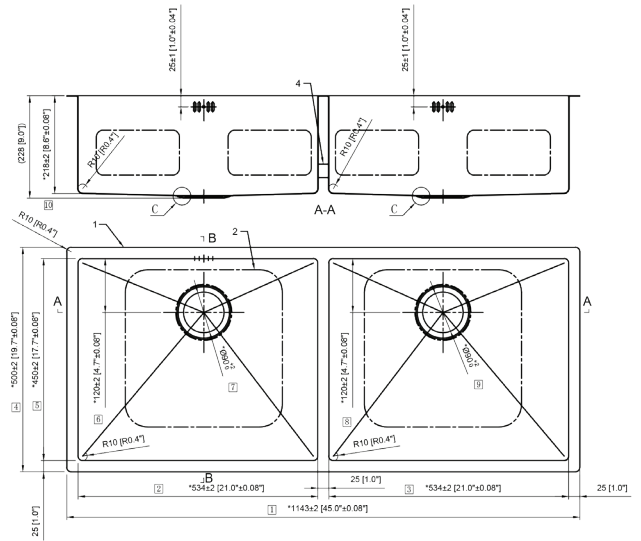


SAPPHIRE R4520 - DOUBLE BOWL



567.24.297

- > Overall Size mm (inch): 1143 X 500 (45" X 20")
- > Bowl Size mm (inch): 534 X 450 (21" X 18") each
- > Depth mm (inch): 228 (9")



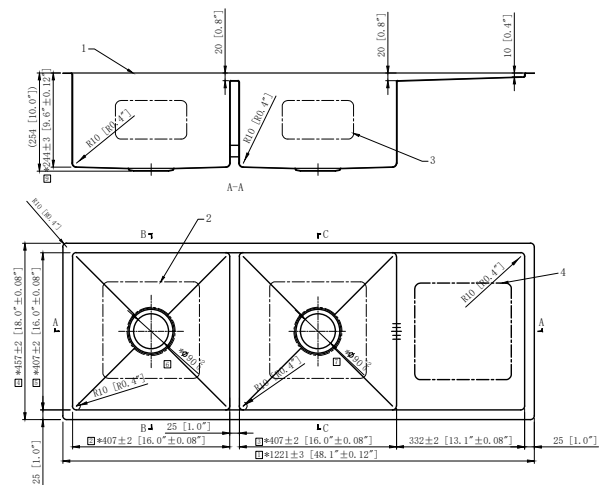


RUBY R4818- DOUBLE BOWL WITH DRAINBOARD



567.24.287

- > Overall Size mm (inch): 1221 X 457 (48" X 18")
- > Bowl Size mm (inch): 407x407 (16" X 16")
- > Depth mm (inch): 254 (10")



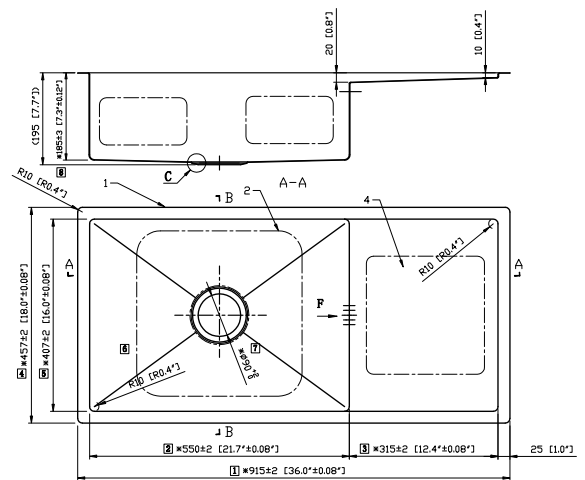


EMERALD R 3618 - SINGLE BOWL WITH DRAINBOARD



567.24.187

- > Overall Size mm (inch): 915x457 (36" X 18")
- > Bowl Size mm (inch): 550x407 (22" X 16")
- > Depth mm (inch): 195 (8")





SPLASH

Punch Bowl Kitchen Sinks

The Splash Kitchen Sinks by Häfele are carefully engineered through a unique drawing process where pressure is individually controlled in combination with a lubrication process which draws out the sink bowls from a Grade 304 Stainless Steel sheet, without the steel itself breaking. The stainless steel sinks are then coated with an elegant satin finish to add a layer of protection against scratching or rusting. The grade 304 composition of Stainless Steel with 18% Chromium & 8% Nickel further enhances the durability of our sinks, making them highly tolerant to humid conditions

Additionally, these sinks are tested to resist any external damages like chipping, cracking or peeling and the hygienic and aseptic properties of stainless steel make the maintenance virtually effortless! The well rounded shape of the Splash sinks also makes way for easy cleaning, eliminating the chances of any unwanted residues accumulating in the remote corners of the sink bowl.

With extra deep bowl depths, these sinks make the washing of heavy-duty vessels an effortless task. The Splash Range of Sinks comes with a special stone guard undercoating and rubber padding to absorb excessive noise levels of utensils during use. All sinks from this series come with a 10 year warranty against faulty workmanship and material.

FEATURES



Corrosion-Resistant:

Häfele's range of SPLASH sinks are made up of 1mm Stainless Steel Grade 304 which makes them highly durable and resistant to corrosion



Contemporary Finish:

These sinks come with a premium Satin Finish which not only exudes elegance but also provides scratch resistance.



Reduces Noise Levels:

The Splash sinks are padded and Stone-Guard undercoated resulting in reduced noise levels when they are in use



Huge Capacity:

Häfele's Range of SPLASH Sinks, with extra deep bowl depths, can easily accommodate heavy vessels during any cleaning cycle



Versatile Drain System:

The drain outlet is compatible with most garbage disposals available in the market. It comes with a stainless steel strainer and a plastic drainage pipe.



Comprehensive Packaging:

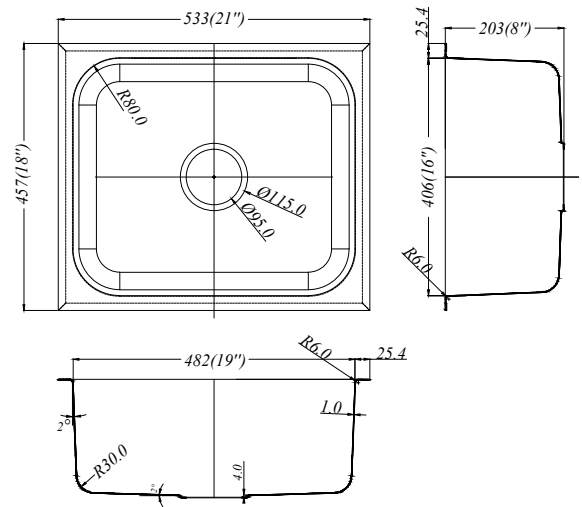
These sinks come in an all-inclusive, easy-to-carry package equipped with mounting & installation brackets as well as cut-out templates



10 Year Warranty:

Häfele offers a 10-years* warranty on its Splash range against faulty workmanship and manufacturing defect from the date of invoice. **T&C Apply**

ASTRAL SINGLE BOWL 2118



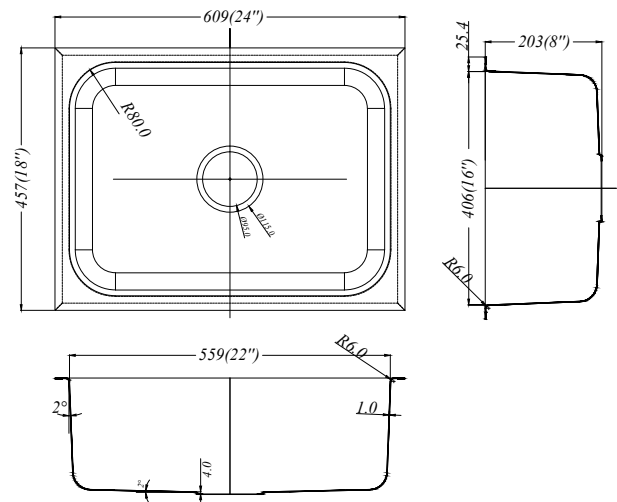
577.00.040

- > Overall Size (mm/inch): 533 X 457 / 21" X 18"
- > Bowl Size (mm/inch): 482 X 406 / 19" X 16"
- > Depth (mm/inch): 203 / 8"

Optional Accessories:

Drainkit - Astral Bottle Trap Kit SB - 577.00.901

ASTRAL SINGLE BOWL 2418



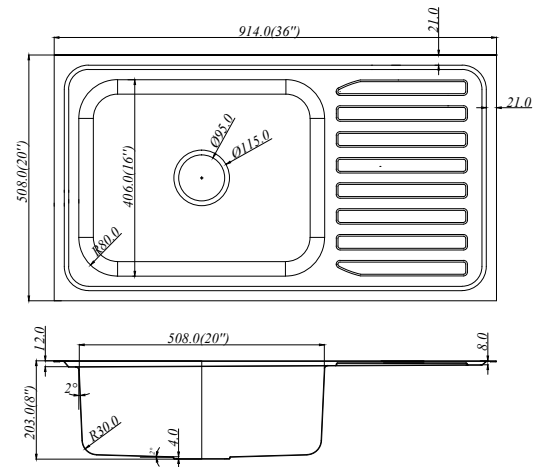
577.00.030

- > Overall Size (mm/inch): 609 X 457 / 24" X 18"
- > Bowl Size (mm/inch): 559 X 406 / 22" X 16"
- > Depth (mm/inch): 203 / 8"

Optional Accessories:

Drainkit - Astral Bottle Trap Kit SB - 577.00.901

ASTRAL SINGLE BOWL WITH DRAINBOARD 3620



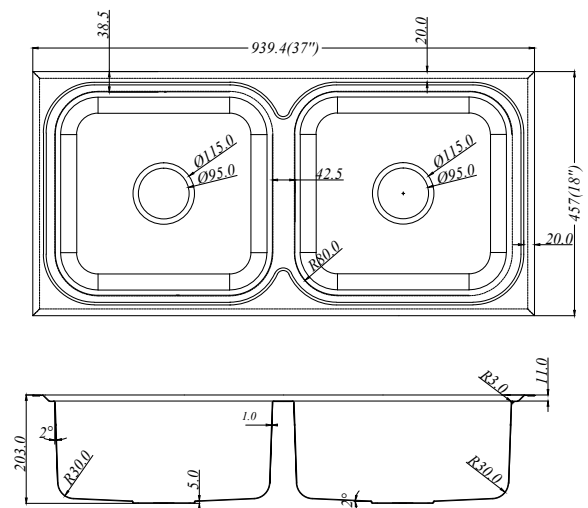
577.00.020

- > Overall Size (mm/inch): 914 X 508 / 36" X 20"
- > Bowl Size (mm/inch): 508 X 406 / 20" X 16"
- > Depth (mm/inch): 203 / 8"

Optional Accessories:

Drainkit - Astral Bottle Trap Kit SB - 577.00.901

ORION DOUBLE BOWL 3718



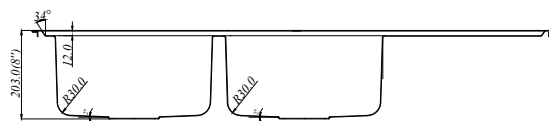
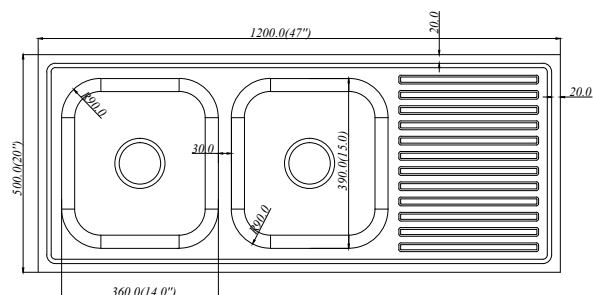
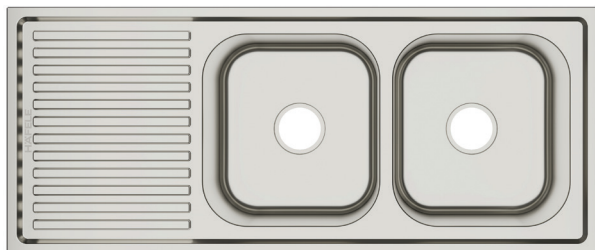
577.00.010

- > Overall Size (mm/inch): 939 X 457 / 37" X 18"
- > Bowl Size (mm/inch): 381 X 406 / 15" X 16"
- > Depth (mm/inch): 203 / 8"

Optional Accessories:

Drainkit - Orion Bottle Trap Kit DB - 577.00.900

ORION DOUBLE BOWL WITH DRAINBOARD 4720



577.00.000

- > Overall Size (mm/inch): 1200 X 500 / 47" X 20"
- > Bowl Size (mm/inch): 360 X 390 / 14" X 15"
- > Depth (mm/inch): 203 / 8"

Optional Accessories:

Drainkit - Orion Bottle Trap Kit DB - 577.00.900

Maintenance Tips

- Frequent and regular cleaning – keep the sink clean and dry when not in use
- Keep the sink free from any standing water at all possible times
- Avoid the accumulation of water high in iron content as it can leave brown stains on the sink surface
- Remove the Lacquer sheet only after installation

Things that can harm your sinks

- Do not allow any mineral deposits
- Do not use steel wool or abrasive pads to clean your sink
- Do not leave rubber dish mats, wet sponges or cleaning pads in the sink overnight
- Do not use the sink as a cutting surface or cutting board
- Do not allow ordinary or white cement to deposit on the sink after installation
- Do not use household products, cleaning products, bleach or leave food which contains chlorine, sulphuric / hydrochloric acid as they are potentially harmful to your sink
- Pickles, mayonnaise, mustard and salt laden food should not be left on /in the sink for a long period.

**Mumbai Design Centre:**

Haji Moosa Patrawala Ind.(SOBO)
Estate, Near Famous Studio,
Mahalaxmi (West), Mumbai - 400 011
Tel.: 022 6264 7100

Mumbai Design Centre:

#2 Filix Building, Opp. Asian Paints,
L.B.S. Marg, Bhandup (West),
Mumbai - 400 078
Tel.: 022 2596 9660 / 2596 9787 /
2594 7305

Pune Design Centre:

Showroom No. 2, Ground Floor,
F P No. 403, A/2, ICC Trade Tower,
Senapati Bapat Marg,
Shivaji Nagar, Pune - 411 016
Tel.: 020 2563 3301
Fax: 020 2563 3302

Pune Office:

Office No. 12, Vastushree Complex,
Survey No.587,
Near Hyde Park, Gultekdi,
Market Yard, Pune - 411 037
Tel.: 020 2426 6264
Fax: 020 2426 6274

Ahmedabad Office:

Häfele India Pvt. Ltd., Office No. 302,
3rd Floor, Shangrila Arcade, Near
Shyamal Cross Road, Satellite,
Ahmedabad - 380 015
Tel.: +91 79695 55505 / 88662 20505

New Delhi Office & Design Centre:

D-89 , 1st Floor, Okhla Phase-I,
New Delhi - 110 020
Tel.: 011 6657 4999
Fax: 011 4160 5482

Chandigarh Office:

Godrej Eternia, Wing A, 2nd Floor,
WL2, Plot No.70, Industrial Area
Phase I, Chandigarh - 160 002
Mob.: +91 85588 44448

Jaipur Office:

Airport Plaza, Plot No.15, 1st & 2nd
floor, Tonk Road, Next to Cocoon
Hospital, Jaipur, Rajasthan - 302 016
Mob.: +91 98887 77796

Kolkata Design Centre:

PS PACE, Premises No. 1/1A,
Mahendra Roy Lane, Topsia,
Kolkata - 700 046
Tel.: 033 4008 6814 / 4008 9268
Fax: 033 2498 8020

Kolkata Office:

Office No. 1001, PS Continental,
10th Floor, 83/2/1 Topsia Road,
Near Vishwakarma Building.
South Kolkata - 700 046
Tel: 033 2285 0104 / 5 / 6

Bangalore Office & Design Centre:

Incubex Nestavera Spaces Pvt Ltd,
No:13, Langford Place, Langford
Road, Shanti Nagar,
Bangalore - 560 025
Tel.: 080 4132 6116
Fax: 080 4132 6226

Bangalore**Häfele Appliances Gallery:**

No. 2/1, Shiv Manor, Langford Road,
Shantinagar, Bangalore - 560 027
Tel.: 080 4142 6336

Hyderabad Office & Design Centre:

SJR Building - # 1-57/89/1 & 1-57/89/2
Opp Allahabad Bank, Gachibowli,
Hyderabad - 500 032
Tel.: 040 2955 7578 / 88

Chennai Office & Design Centre:

1st Floor No.24, College Road,
Nungambakkam, Chennai - 600 006
Tel.: 044 4215 1542
Fax: 044 2446 0922

Cochin Office:

Jomer Symphony, 5th Floor, 48/1744
C34, Chalikkavattom, North
Ponnurunni, Vyttila, Cochin - 682010

Sri Lanka:**Häfele Office and Design Centre:**

52, Nandana Gardens
(On Duplication Road), Colombo 04.
Tel: +94 112 500 501
Fax: +94 112 500 553

Häfele Design Centre:

448, Galle Road, Rawathawatta,
Moratuwa, Sri Lanka.
Tel.: +94 112 644 600

Häfele Design Centre:

752, Peradeniya Rd,
Kandy, Sri Lanka.
Tel.: +94 812 223 338

Bangladesh Office:

2nd Floor, House - 181, Road - 2,
Mohakhali DOHS, Dhaka - 1206.
Tel.: 018 4401 8431 / 32 / 33 / 37

Bangladesh Design Center:

House - 106, Road - 12,
Block - E, Banani, Dhaka - 1213
Tel.: +880 2 - 4881 0380 / 81

Nepal:

UHS Holdings Pvt. Ltd.
Kathmandu-2, Gairidhara Chowk,
Nepal.
Mob.: +977 98023 38800

Bhutan:**SMART HOMES**

Gr. Floor, Druk Building (Opp Helipad)
Babesa -Thimpu Expressway, Thimpu
Tel.: +975 - 2 - 333 419
Mob.: +975 - 7727 7615 / 1783 9717 /
7711 4228 / 1760 0663 / 1766 9840

HAFELE

**Maximising
the value of space.
Together.**

Office No. 3, Building "A", BETA, I Think Techno
Campus, Off J.V.L.R, Opp. Kanjurmarg East,
Mumbai – 400 042.

Tel: 022 6142 6100 | **Fax:** 022 6702 0531.

Toll Free Customer Care No.: 1800 266 6667
Customer Care WhatsApp No.: +91 9769111122

info@hafeleindia.com

customercare@hafeleindia.com

Follow us on

