

HÄFELE

Let's
Reimagine



[SPACE]²
— R A N G E —

The transformable
furniture fittings range



[SPACE]²

— R A N G E —

HÄFELE

ALADINO Hide Away Double Bed Fitting



- ▶ Material: Bed fittings-mild steel; slats-rubber wood
- ▶ Finish: Silver grey powder coated - RAL 9006
- ▶ Mechanism: Vertical folding with 4 gas pumps
- ▶ Dimensions of slatted frame: 1620 (W) × 2000 (L) mm
- ▶ Mattress thickness & weight: 150 - 250 mm; 20 - 25 kg
- ▶ Cycle testing: 50,000 cycles
- ▶ Weight carrying capacity:
 - ▶ Slatted frame gas pump (2 nos.): 180 kg each
 - ▶ Footboard gas pumps (2 nos.): 10 kg each

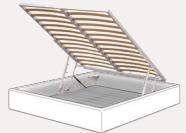
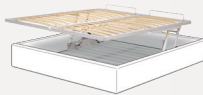
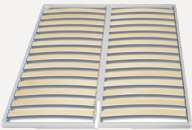
Other Details::

- ▶ Integrated soft opening mechanism
- ▶ Automatic functioning and positioning of the footboard while opening
- ▶ Manufactured and tested in Italy

Article Number: 271.95.285

Note: Cabinet Carcass and Mattress are not included in the Bed Fitting Set.

PRATIK Storage Bed Fitting



- ▶ Material: Bed fittings - mild steel; slats - beech wood
- ▶ Finish: Silver grey powder coated - RAL 9006
- ▶ Mechanism: Bed lift mechanism with horizontal elevation and complete opening
- ▶ Dimensions of slatted frame: 1800 (W) × 2000 (L) mm
- ▶ Weight carrying capacity: 200 kg (evenly distributed)
- ▶ Mattress thickness & weight: 150 - 250 mm; 20 - 25 kg

Other Details:

- ▶ Integrated soft opening mechanism
- ▶ Manufactured and tested in Italy

Bed Fitting Article Number: 274.52.915

Slatted Frame Article Number: 271.00.018

Note: Cabinet Carcass and Mattress are not included in the Bed Fitting Set.

ORBIT Folding and Swivel Bed Fittings



- ▶ Material: Bed fittings-mild steel; slats-beech wood
- ▶ Finish: Epoxy dust
- ▶ Mechanism: Vertical folding and swivel with amortized pistons
- ▶ Dimensions of slatted frame: 1630 (W) × 2020 (L) mm
- ▶ Max. weight carrying capacity:
 - ▶ Bed in the open position: 200 kg (evenly distributed)
 - ▶ Swivel cabinet furniture: 100 kg
 - ▶ Objects placed on the cabinet: 30 kg
- ▶ Mattress thickness & weight: 150-200 mm; 20-25 kg for mattress
- ▶ Height adjustment (synchronised legs): 23 mm
- ▶ Piston force: 1000 N each
- ▶ Rotation: 180°; Half rotation
- ▶ Cycle testing: 3,000 cycles
- ▶ Automatic functioning and positioning of the adjustable and synchronised legs while opening

Article Number: 271.95.277

Note: Cabinet Carcass and Mattress are not included in the Bed Fitting Set.

SUPERNOVA Push to Open Hide-Away Bed System

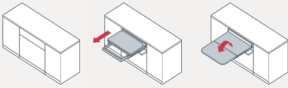


- Material: Bed fittings - mild steel; slats - beech wood
- Finish: Epoxy dust
- Mechanism: Push-to-open, vertical folding with amortized pistons
- Max. weight carrying capacity: 200 kg (in the open bed position)
- Dimensions of slatted frame: 1830 (W) × 2020 (L) mm
- Mattress thickness & weight: 150-250 mm; 20-25 kgs
- Height adjustment (synchronised legs): 23 mm
- Piston force: 1800 N each
- Cycle testing: 10,000 cycles
- Integrated soft closing mechanism
- Automatic functioning and positioning of the frontal synchronised and adjustable legs while opening

Article Number: 271.95.279

Note: Cabinet Carcass and Mattress are not included in the Bed Fitting Set.

LUNCH Extendable Table Fitting



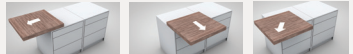
- ▶ Max. weight carrying capacity: 60 kg
- ▶ Dimensions: 450-900 (W) mm
- ▶ Cycle testing: 40,000 Cycles
- ▶ Material: Aluminium
- ▶ Finish: Stainless steel
- ▶ Mechanism: Drawer pull-out extendable slides

Other Details:

- ▶ One article for variable widths
- ▶ Smooth and silent functionality
- ▶ Lock-in feature for extendable slides is available
- ▶ Manufactured and tested in Italy

Article Number: 505.75.925

AXIS LINEAR Countertop Extension



- ▶ Material: Mild steel
- ▶ Finish: Zinc plated
- ▶ Mechanism: Extendable slides
- ▶ Min. Internal countertop extension depth (mm): 550 (Model No.600)/ 850 (Model no.900)/ 1150 (Model No.1200)
- ▶ Weight carrying capacity: 120 kg (can be increased up to 240 kg with central extendable slides)
- ▶ Movement: Linear (horizontal, vertical and diagonal)

Other Details:

- ▶ Invisible mechanism
- ▶ Manufactured and tested in Italy

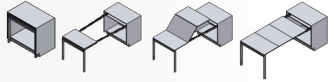
Extending Slides (For countertop extension widths up to 1500mm)

| Model No. | Article Number |
|-----------|----------------|
| 600 | 505.79.901 |
| 900 | 505.79.902 |
| 1200 | 505.79.903 |

Central Extendable Slides (For countertop extension widths more than 1500 mm)

| Model No. | Article Number |
|-----------|----------------|
| 600 | 505.79.911 |
| 900 | 505.79.912 |
| 1200 | 505.79.913 |

EVOLUTION NAKED XL Pull Out Table Fitting with Bridge Legs



- ▶ Max. weight carrying capacity: 100 kg
- ▶ Dimensions: 900 (W) mm
- ▶ Material: Aluminium
- ▶ Finish: Stainless steel
- ▶ Number of planes: 3
- ▶ Mechanism: cabinet pull-out extendable slides

Other Details:

- ▶ Smooth and silent functionality
- ▶ Cabinet application, comes with legs
- ▶ Lock-in feature for extendable slides and the planes is available
- ▶ Manufactured and tested in Italy



Article Number: 505.75.995

QUBIT Rotating TV Fitting



- ▶ Material: Mild steel
- ▶ Finish: Epoxy dust
- ▶ Mechanism: Swivel mechanism for wooden furniture
- ▶ Rotation: 180°; half rotation
- ▶ Weight carrying capacity:
 - ▶ Swivel cabinet furniture: 60 kg
 - ▶ Objects placed on the cabinet: 15 kg (including the TV fitting)

Other Details::

- ▶ Can install a TV fitting up to 32 inches
- ▶ Manufactured and tested in Italy

Article Number: 646.12.110

[SPACE]²

R A N G E

HAFELE

ALADINO ELEKTRA Motorized Hide Away Bed System



- Finish: Aluminium grey powder coated
- Dimensions of slatted frame: 1620 (W) × 2000 (L) mm
- Mattress size: 1600 (W) × 2000 (L) × 200 (H) mm
- Total weight carrying capacity: 200 kgs
- Piston force: 1600 N
- Mattress weight: 23-33 kgs
- Footboard weight: 8.5-10 kgs
- Electrical automation: 230 V~50 Hz power supply
- Degree of electrical protection: IP20
- Noise level: < 80 dB(A)
- Provided with electronic receiver box, connection cables, infrared remote control and wire remote control

Other Details:

- Remote controlled opening and closing of the hide-away bed fitting
- Automatic functioning and positioning of the footboard while opening
- Manufactured and tested in Italy

Article Number: 271.95.305

Note: Cabinet Carcass and Mattress are not included in the Bed Fitting Set.

HAFELE

New Delhi | Kolkata | Cochin | Chennai | Hyderabad | Bangalore |
Mumbai | Pune | Ahmedabad |

Sri Lanka | Bangladesh | Nepal | Bhutan | Maldives |

Toll Free Customer Care No.: 1800 266 6667

Customer Care WhatsApp: +91 97691 11122

SMS "HAFELE" to 56070

customercare@hafeleindia.com | www.hafeleindia.com

