

HÄFELE



www.haefeindia.com

FREE SPACE









COMPACT

STRONG

EFFICIENT

ELEGANCE FOR ANY FLAP.

FREE SPACE
ENGINEERED BY HÄFELE.

The fittings of the Free family give flaps new freedom in movement. This opens up more opportunities in the visual and technical design of furniture and has tangible benefits compared to hinged doors. But above all, it gives the furniture and the room undreamt elegance and lightness. With the new Free Space, Häfele offers an innovative stay flap fitting which, with its strong features and universal aesthetics, can be used in furniture across interior spaces. It immediately provides added value and more efficiency when working.

Almost 100 years of experience with furniture fittings, engineering expertise, and a close connection to the market and the people who work with furniture fittings on a daily basis led to the development of Free Space. Inspired by the requirements of the market of tomorrow Free space fulfils all demands for creative freedom and choice of material, design, ease of installation and convenient operation on a whole new level.



LESS INSTALLATION DEPTH. MORE STORAGE SPACE.

Free space is characterised by an extremely compact size that goes hand in hand with a fine, understated, yet distinctive design.

This “less” creates “more” room and storage space in furniture, eliminates the need for large cover caps, and also opens up new freedom for modern furniture design such as convenient flaps for shallow cabinet depths.



Size of conventional
flap fittings

COMPACT
STRONG
EFFICIENT

FREE SPACE

is available in 3 attractive colours:
white, light grey and anthracite.



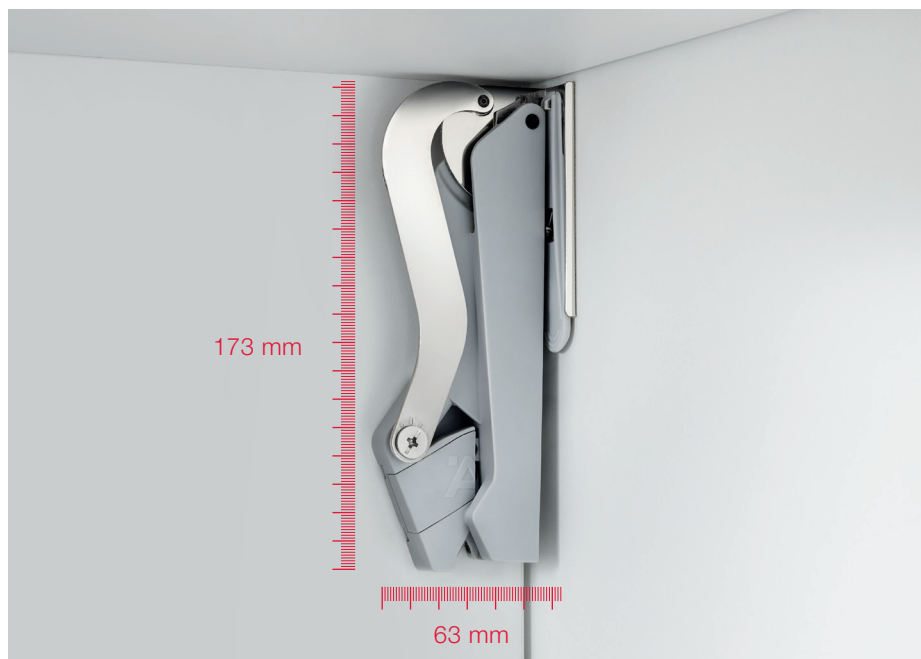
> white



> light grey



> anthracite



LESS MODELS. MORE APPLICATIONS.

Load bearing capacity up to 10.7 kg
with cabinet height of 400 mm

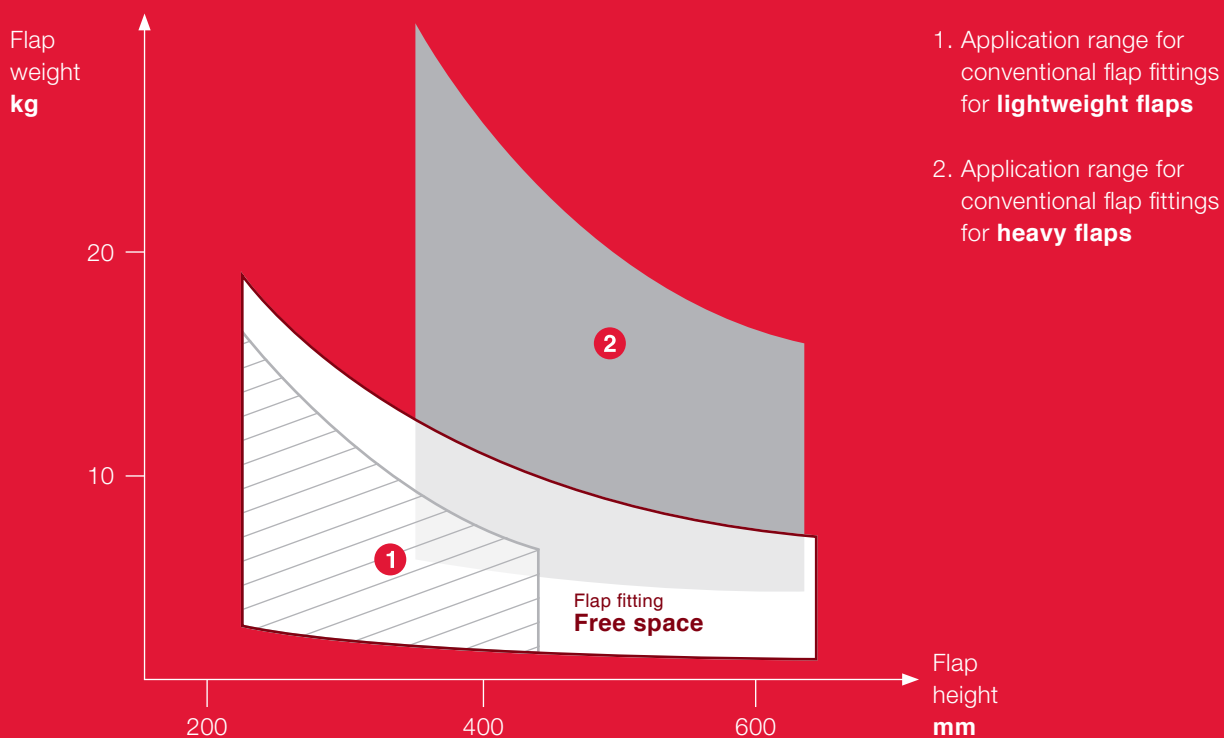
10.7 kg



Free space, across its different model variants, is characterised by unique performance capabilities, covering up to 80 % of all common stay flap applications. This therefore allows using the same product series for a much wider range of applications than previous hingeless stay flap fittings.

Free space can be used for flaps with or without furniture handle:

- > Model series **Free space 1.11** for flaps with handles
- > Model series **Free space 1.8 push** for flaps without handle with Push-to-Open function; the associated push catches are colour matched to the Free space fittings



LESS PARTS. MORE PRODUCTIVITY.



FASTER
AND EASIER
INSTALLATION

As the “smartest combination of less and more”, Free space on the one hand enables a very high degree of standardisation in production and, on the other hand, noticeably conserves resources in transport and logistics.

COMPACT

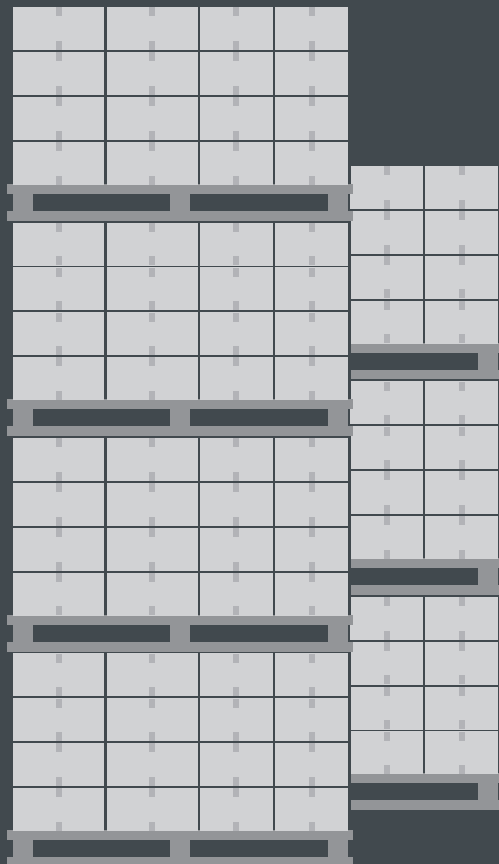
STRONG

EFFICIENT

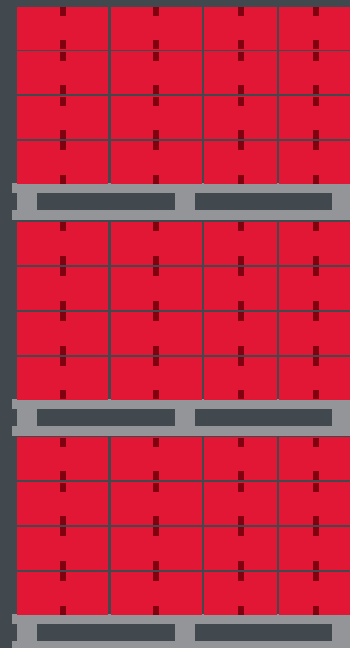
LESS STORAGE AREA. MORE SPACE.

Fewer individual parts ...

that means: Clear order lists
and simplified stocking.



> Conventional flap fitting



> Free space

FREE SPACE



Extremely Powerful

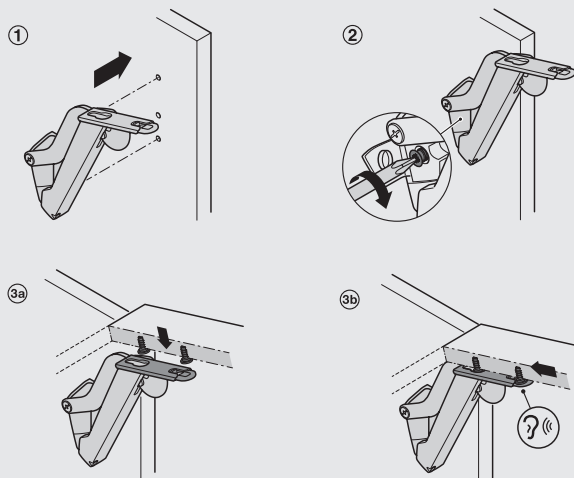
Less models for more applications



> Load bearing capacity up to 10.7 kg with cabinet height 400 mm

Extremely Fast

Fewer manual operations for easier installation



- ① Fit the lift mechanism in place onto the pre-drilled side panel with the help of the built-in positioning pins
- ② Tighten the pre-mounted Euro screw
- ③ Fit the front panel to the lever arms ③a and slide on until it engages ③b

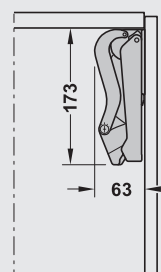
- > Hinge-less stay lift system for more free room in all respects
- > Extremely powerful: A product series that caters to majority of the most common flap sizes and weights
- > Extremely compact: Minimal appearance and more storage space in the furniture
- > Extremely gentle running characteristics for a pleasant operating feeling
- > Extremely fast and time-saving processing
- > Extremely adaptable: Three standard colours
- > For flaps with handle and flaps without handle with push opening

Technical Specifications

- > Area of application: For standard front panel applications with front height up to 650 mm
- > Material: Fitting: Steel, Housing: Plastic
- > Finish/colour: Fitting: Nickel plated, Housing: Grey, white or anthracite
- > Opening angle: 90° or 107°
- > Adjustment facility: Height, side, tilting angle, holding power
- > Installation: Fitting: for screw fixing on pre-drilled side panel with pre-mounted Euro screw and built-in positioning pins, Front Panel: Tool-free assembly (clip system) onto pre-mounted fixing screws

Extremely Compact

Less installation depth for more storage space



- > Required internal installation depth of only 63 mm
- > Required internal installation height of only 173 mm

Extremely Easy

More clarity for fewer questions during installation



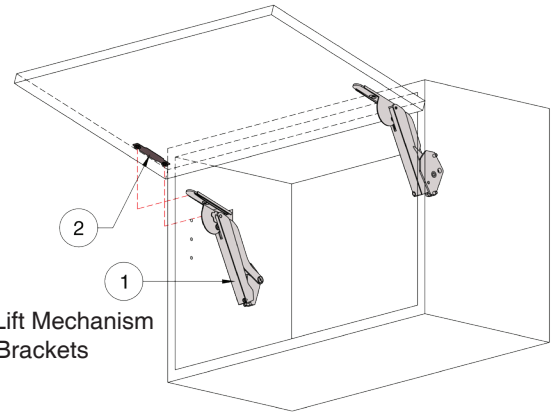
Extremely Adaptable

More design freedom with less effort



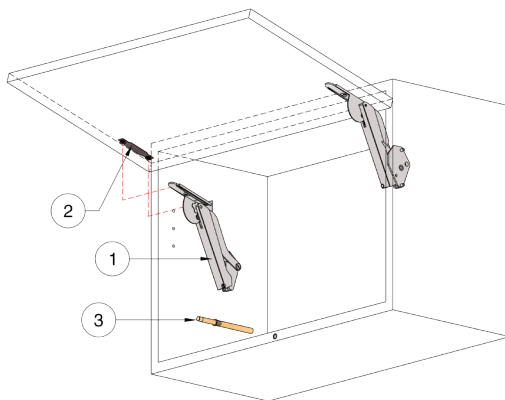
FREE SPACE

Product Specification



Free space 1.1

- 1 Free Space Lift Mechanism
- 2 Front Fixing Brackets



Free space 1.8 Push to Open

- 1 Free Space Lift Mechanism
- 2 Front Fixing Brackets
- 3 Push to Open Trigger

Mechanism Selection Table

Cabinet Height (mm)	Free Space				
	B (1.11 & 1.8)	C(1.11 & 1.8)	D(1.11 & 1.8)	E(1.11 & 1.8)	F(1.11)
	Flap Weight in Kg				
225	2.3-4.3	3.8-7.1	6.4-9.3	9.2-13.4	13.4-19.1
250	1.9-3.9	3.4-6.4	5.8-9.1	8.3-12.6	12.1-17.2
275	1.9-3.5	3.1-5.8	5.3-8.2	7.5-12.0	11.0-15.6
300	1.7-3.2	2.8-5.3	4.8-7.5	6.9-11.0	10.1-14.3
325	1.6-3.0	2.6-4.9	4.4-7.0	6.4-10.2	9.3-13.2
350	1.5-2.8	2.4-4.6	4.1-6.5	5.9-9.5	8.6-12.3
375	1.3-2.6	2.2-4.3	3.8-6.0	5.5-8.8	8.1-11.4
400	1.2-2.4	2.1-4.0	3.6-5.6	5.2-8.3	7.6-10.7
425	1.1-2.3	2.0-3.8	3.4-5.3	4.9-7.8	7.1-10.1
450	1.0-2.1	1.9-3.5	3.2-5.0	4.6-7.3	6.7-9.5
475	1.0-2.0	1.8-3.4	3.0-4.7	4.3-7.0	6.4-9.0
500	0.9-1.9	1.7-3.2	2.9-4.5	4.1-6.6	6.0-8.6
525	0.9-1.8	1.6-3.0	2.7-4.3	3.9-6.3	5.7-8.2
550	0.8-1.7	1.5-2.9	2.6-4.1	3.7-6.0	5.5-7.8
575	0.8-1.7	1.4-2.8	2.5-3.9	3.6-5.7	5.2-7.4
600	0.8-1.6	1.4-2.7	2.4-3.7	3.4-5.5	5.0-7.1
625	0.7-1.5	1.3-2.5	2.3-3.6	3.3-5.3	4.8-6.8
650	0.7-1.5	1.3-2.4	2.2-3.5	3.2-5.1	4.6-6.6

FREE SPACE

Ordering information

Standard Configuration Sets & Components



> white



> anthracite



> light grey

Free space 1.11

Model	Anthracite	Grey	White
B	372.27.920	372.27.925	372.27.930
C	372.27.921	372.27.926	372.27.931
D	372.27.922	372.27.927	372.27.932
E	372.27.923	372.27.928	372.27.933
F	372.27.924	372.27.929	372.27.934

Consists of: Free space 1.11 Lift Mechanism - Left and Right and 2 Front Fixing Brackets for Wooden Front Panels or Front Panels with Wide Aluminium Frame (Min. Frame Width: 45 mm).

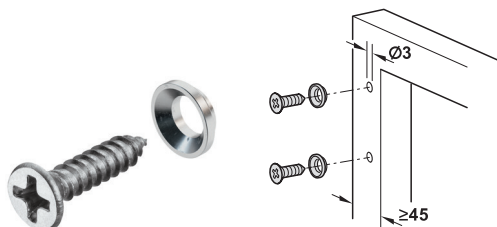
Free space 1.8 Push to Open

Model	Anthracite	Grey	White
B PTO	372.27.935	372.27.939	372.27.943
C PTO	372.27.936	372.27.940	372.27.944
D PTO	372.27.937	372.27.941	372.27.945
E PTO	372.27.938	372.27.942	372.27.946

Consists of: Free space 1.8 Push-to-Open Lift Mechanism - Left and Right, 2 Front Fixing Brackets for Wooden Front Panels or Front Panels with Wide Aluminium Frame (Min. Frame Width: 45 mm) and Push-to-Open Trigger.

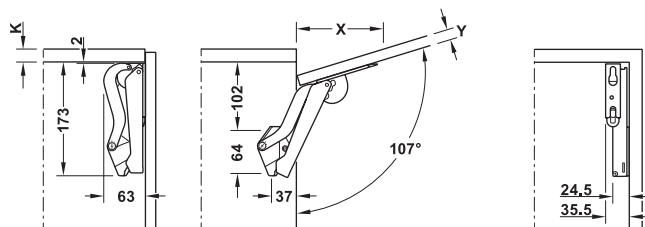
Individual Components

Fixing screws for flaps with aluminium frame



> For wide aluminium shutters, where width of frame ≥ 45 mm

Planning and Space Requirement



Front panel thickness Y mm	16	18	19	22	24	26	28
Distance X mm (with cabinet top panel thickness 16 mm)	117	110	107	96	90	83	76

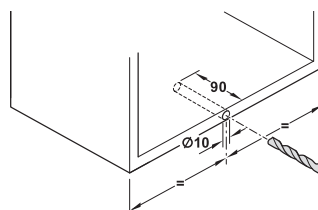
Supplied with

4 screws and 4 collar rings

Material	Finish	Article No.
Steel	Nickel plated	372.27.600

Unit: 1 Set

Push-to-Open Trigger installation



Hafele Free space
Overview



Free space 1.11



Free space 1.8
Push-to-Open





INTERNAL QUALITY CERTIFICATE.



We herewith confirm that the following furniture resp. flap fitting:



Type: **Häfele Free space 1.11**

is tested internally on a regular basis at our production facilities according to DIN EN 15828 furniture standard for:

- > Static and dynamic overload: in line with level 3 specifications
- > Function incl. opening and closing forces: in line with level 3 specifications
- > Durability: min. 80.000 opening and closing cycles (corresponding to double the norm standard)
- > Sagging resistance: < 0,5% of cabinet width
- > Corrosion resistance: three cycles AHT in accordance to EN ISO 6270-2

The continuous compliance of our products with the relevant norm specifications ensures perfect function and lasting comfort over their lifetime.

FREE SPACE

HÄFELE

INTERNAL QUALITY
CERTIFICATE.

We herewith confirm that the following furniture resp. flap fitting:



Type: **Häfele Free space 1.8 push**

is tested internally on a regular basis at our production facilities according to DIN EN 15828 furniture standard for:

- > Static and dynamic overload: in line with level 3 specifications
- > Function incl. opening and closing forces: in line with level 3 specifications
- > Durability: min. 80.000 opening and closing cycles (corresponding to double the norm standard)
- > Sagging resistance: < 0,5% of cabinet width
- > Corrosion resistance: three cycles AHT in accordance to EN ISO 6270-2

The continuous compliance of our products with the relevant norm specifications ensures perfect function and lasting comfort over their lifetime.

**Mumbai Design Centre:**

Haji Moosa Patrawala Ind.(SOBO)
Estate, Near Famous Studio,
Mahalaxmi (West), Mumbai - 400 011
Tel.: 022 6264 7100

Mumbai Design Centre:

#2 Filix Building, Opp. Asian Paints,
L.B.S. Marg, Bhandup (West),
Mumbai - 400 078
Tel.: 022 2596 9660/
2596 9787/2594 7305

New Delhi Office & Design Centre:

D-89 , 1st Floor, Okhla Phase-I,
New Delhi - 110 020
Tel.: 011-66574999
Fax: 011-41605482

Bangalore Office & Design Centre:

Incubex Nestavera Spaces Pvt Ltd,
No.13, Langford Place, Langford Road,
Shanti Nagar, Bangalore - 560 025
Tel.: 080 4132 6116
Fax: 080 4132 6226

Bangalore**Hafele Appliances Gallery:**

No. 2/1, Shiv Manor, Langford Road,
Shantinagar, Bangalore - 560027
Tel.: 080 - 4142 6336

Hyderabad Office & Design Centre:

SJR Building - # 1-57/89/1 & 1-57/89/2
Opp Allahabad Bank, Gachibowli,
Hyderabad - 500032
Tel.: 040 29557578 / 040 29557588

Kolkata Design Centre:

PS PACE, Premises No. 1/1A,
Mahendra Roy Lane, Topsia,
Kolkata - 700 046
Tel.: 033 40086814 / 033 40089268
Fax: 033 24988020

Kolkata Office:

Office No. 1001, PS Continental,
10th Floor, 83/2/1 Topsia Road,
Near Vishwakarma Building.
South Kolkata - 700046
Tel: 033-2285 0104 /
033-2285 0105 / 033-2285 0106

Chennai Office & Design Centre:

1st Floor No.24, College Road,
Nungambakkam, Chennai - 600 006
Tel.: 044 - 4215 1542
Fax: 044 2446 0922

Pune Design Centre:

Showroom No. 2, Ground Floor,
F P no. 403, A/2, ICC Trade Tower,
Senapati Bapat Marg,
Shivaji Nagar, Pune -411016
Tel.: 020 2563 3301
Fax: 020 2563 3302

Pune Office:

Office No. 12, Vastushree Complex,
Survey No.587,
Near Hyde Park, Gultekdi,
Market Yard, Pune - 411 037
Tel.: 020 2426 6264
Fax: 020 2426 6274

Ahmedabad Office:

Hafele India Pvt. Ltd., Office No. 302,
3rd Floor, Shangrila Arcade, Near
Shyamal Cross Road, Satellite,
Ahmedabad - 380015
Tel.: +91 79695 55505 / 8866220505

Cochin Office:

Jomer Symphony, 5th Floor, 48/1744
C34, Chalikkavattom, North Ponnurrunni,
Vyttila, Cochin- 682010

Sri Lanka:**Hafele Office and Design Centre:**

52, Nandana Gardens
(On Duplication Road), Colombo 04.
Tel: +94 112 500 501
Fax: 0094 112 500 553

Hafele Design Centre:

448, Galle Road, Rawathawatta,
Moratuwa, Sri Lanka.
Tel.: +94 112 644 600

Hafele Design Centre:

752 Peradeniya Rd,
Kandy 20000, Sri Lanka.
Tel.: +94 812 223 338

Bangladesh Office:

2nd Floor, House - 181, Road - 2,
Mohakhali DOHS, Dhaka - 1206.
Tel.: 01844018431/ 01844018432/
01844018433/ 01844018437

Bangladesh Design Center:

House - 106, Road - 12,
Block - E, Banani, Dhaka - 1213
Tel.: 02-48810380-81

Nepal:

UHS Holdings Pvt. Ltd.
Kathmandu-2, Gairidhara Chowk, Nepal.
Mob.: +977 9802338800

Bhutan:**SMART HOMES**

Gr. Floor, Druk Building (Opp Helipad)
Babesa -Thimpu Expressway, Thimpu
Tel.: +975-2-333419
Mob.: +975-77277615, 17839717,
77114228,1760063,17669840

HAFELE

Mumbai Corporate Office:

Office No. 3, Building "A", BETA,
I Think Techno Campus, Off J.V.L.R.,
Opp. Kanjurmarg East, Mumbai - 400 042.
Tel.: 022 6142 6100 • Fax: 022 6702 0531.

For Enquiries SMS "HAFELE" to 56070

Toll Free Customer Care: 1800 266 6667
Customer Care WhatsApp: +91 97691 11122
customer@hafeleindia.com
info@hafeleindia.com

Follow us on

