

# TIP-ON BLUMOTION FOR LEGRABOX

## Two functions – fascinatingly combined

**TIP-ON BLUMOTION** combines the advantages of the TIP-ON mechanical opening support system with the reliable BLUMOTION dampening for a silent and effortless closing. This advanced motion technology from Blum can also be used with LEGRABOX, Blum's purist box systems with straight side panels.

The fronts open with just a light touch, have a smooth running action and close silently and effortlessly – experience completely harmonious and flawless motion with the TIP-ON BLUMOTION technology. And the best part: the motion is assisted 100% mechanically!



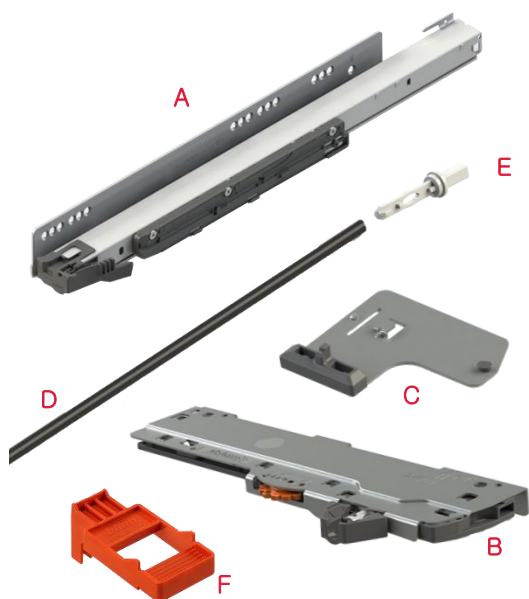
» **Versatile Application:** TIP-ON BLUMOTION for LEGRABOX is the perfect mechanical solution for handle-less furniture in all living areas. Pull-outs and drawers can be installed in the usual manner.

» **Small front gap:** TIP-ON BLUMOTION can be adjusted to have a small front gap of only 2.5 mm, therefore making it ideal for kitchens.

» **4-dimensional adjustment:** The 4-dimensional adjustment ensures a precise gap layout. The integrated depth adjustment can be made tool-free using the adjustment wheel incorporated into the TIP-ON BLUMOTION Unit

» **Reliable function:** It is possible to manually pull open or push close the pull-outs and drawers. The TIP-ON BLUMOTION will remain fully functional.

## TIP-ON BLUMOTION for LEGRABOX



### Component Details <sup>[1]</sup>

- A** TIP-ON BLUMOTION MOVENTO Runner
- B** TIP-ON BLUMOTION Unit
- C** TIP-ON BLUMOTION Latch
- D** TIP-ON BLUMOTION Round Synchronisation Linkage<sup>[2]</sup>
- E** TIP-ON BLUMOTION Synchronisation Adapter
- F** TIP-ON BLUMOTION Front Gap Template<sup>[3]</sup>

<sup>[1]</sup>All the above mentioned components are included in the TIP-ON BLUMOTION for LEGRABOX BOMs together with the individual components of LEGRABOX pure or free

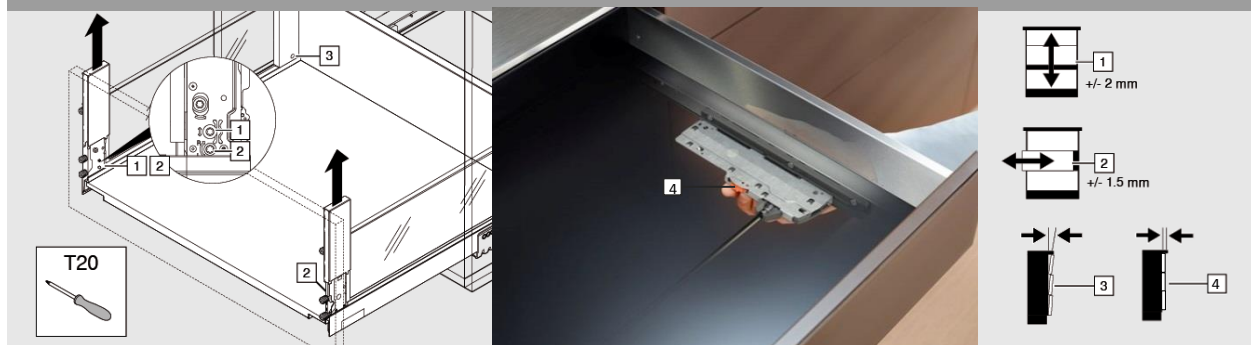
<sup>[2]</sup>The TIP-ON BLUMOTION Round Synchronisation Linkage is recommended for cabinet widths  $\geq 300$  mm and is suitable for all nominal lengths and cabinet widths of up to 1400 mm.

<sup>[3]</sup>The front gap template (Art No. B89.46.234) can be used to precisely and conveniently adjust the front gap to 2.5 mm. This template needs to be ordered separately.

## Tool-free assembly is possible for all TIP-ON BLUMOTION components



## 4-Dimensional Adjustments



**1** Height Adjustment

**2** Side Adjustment

**3** Tilt Adjustment

**4** Depth Adjustment



**BOM ARTICLE INFORMATION : LEGRABOX pure**

Nominal Length	Orion Grey Matt		Stainless Steel		Silk White Matt		Terra Black Matt	
	Article No.	MRP	Article No.	MRP	Article No.	MRP	Article No.	MRP
<b>Standard Drawers</b>								
<i>M-height; 40 Kg</i>								
500	LBG.SD.50MG4	8978	LBG.SD.50MS4	11820	LBG.SD.50MW4	8978	LBG.SD.50MB4	8978
550	LBG.SD.55MG4	9483	LBG.SD.55MS4	12388	LBG.SD.55MW4	9483	LBG.SD.55MB4	9483
<i>C-height; 40 Kg</i>								
500	LBG.SD.50CG4	10766	LBG.SD.50CS4	15894	LBG.SD.50CW4	10766	LBG.SD.50CB4	10766
550	LBG.SD.55CG4	11269	LBG.SD.55CS4	16604	LBG.SD.55CW4	11269	LBG.SD.55CB4	11269
<i>F-height; 40 Kg</i>								
500	LBG.SD.50FG4	14130	LBG.SD.50FS4	20094	LBG.SD.50FW4	14130	LBG.SD.50FB4	14130
550	LBG.SD.55FG4	14660	LBG.SD.55FS4	20826	LBG.SD.55FW4	14660	LBG.SD.55FB4	14660
<i>C-height; 70 Kg</i>								
500	LBG.SD.50CG7	11557	LBG.SD.50CS7	16684	LBG.SD.50CW7	11557	LBG.SD.50CB7	11557
550	LBG.SD.55CG7	12059	LBG.SD.55CS7	17394	LBG.SD.55CW7	12059	LBG.SD.55CB7	12059
<i>F-height; 70 Kg</i>								
500	LBG.SD.50FG7	14920	LBG.SD.50FS7	20885	LBG.SD.50FW7	14920	LBG.SD.50FB7	14920
550	LBG.SD.55FG7	15450	LBG.SD.55FS7	21616	LBG.SD.55FW7	15450	LBG.SD.55FB7	15450
<b>Inner Drawers</b>								
<i>M-height without Design Element; 40 Kg</i>								
500	LBG.IG.50MG4	12543	LBG.IG.50MS4	19594	LBG.IG.50MW4	12543	LBG.IG.50MB4	12543
550	LBG.IG.55MG4	13048	LBG.IG.55MS4	20161	LBG.IG.55MW4	13048	LBG.IG.55MB4	13048
<i>M-height with Design Element; 40 Kg</i>								
500	LBG.ID.50MG4	12609	LBG.ID.50MS4	18857	LBG.ID.50MW4	12609	LBG.ID.50MB4	12609
550	LBG.ID.55MG4	13115	LBG.ID.55MS4	19425	LBG.ID.55MW4	13115	LBG.ID.55MB4	13115
<i>C-height with Gallery; 40 Kg</i>								
500	LBG.IG.50CG4	15991	LBG.IG.50CS4	28673	LBG.IG.50CW4	15991	LBG.IG.50CB4	15991
550	LBG.IG.55CG4	16494	LBG.IG.55CS4	29383	LBG.IG.55CW4	16494	LBG.IG.55CB4	16494
<i>C-height with Design Element; 40 Kg</i>								
500	LBG.ID.50CG4	15105	LBG.ID.50CS4	24276	LBG.ID.50CW4	15105	LBG.ID.50CB4	15105
550	LBG.ID.55CG4	15607	LBG.ID.55CS4	24986	LBG.ID.55CW4	15607	LBG.ID.55CB4	15607
<i>C-height with Gallery; 70 Kg</i>								
500	LBG.IG.50CG7	16782	LBG.IG.50CS7	29464	LBG.IG.50CW7	16782	LBG.IG.50CB7	16782
550	LBG.IG.55CG7	17284	LBG.IG.55CS7	30174	LBG.IG.55CW7	17284	LBG.IG.55CB7	17284
<i>C-height with Design Element; 70 Kg</i>								
500	LBG.ID.50CG7	15895	LBG.ID.50CS7	25067	LBG.ID.50CW7	15895	LBG.ID.50CB7	15895
550	LBG.ID.55CG7	16397	LBG.ID.55CS7	25777	LBG.ID.55CW7	16397	LBG.ID.55CB7	16397



**BOM ARTICLE INFORMATION : LEGRABOX free**

Nominal Length	Orion Grey Matt		Stainless Steel		Silk White Matt		Terra Black Matt	
	Article No.	MRP	Article No.	MRP	Article No.	MRP	Article No.	MRP
<b>Standard Drawers</b>								
<i>C-height; 40 Kg</i>								
500	LBF.SD.50CG4	10856	LBF.SD.50CS4	15618	LBF.SD.50CW4	10856	LBF.SD.50CB4	10856
550	LBF.SD.55CG4	11362	LBF.SD.55CS4	18574	LBF.SD.55CW4	11362	LBF.SD.55CB4	12946
<i>C-height; 70 Kg</i>								
500	LBF.SD.50CG7	11591	LBF.SD.50CS7	16353	LBF.SD.50CW7	11591	LBF.SD.50CB7	11591
550	LBF.SD.55CG7	12096	LBF.SD.55CS7	19308	LBF.SD.55CW7	12096	LBF.SD.55CB7	13680
<b>Inner Drawers</b>								
<i>C-height with Gallery; 40 Kg</i>								
500	LBF.IG.50CG4	16025	LBF.IG.50CS4	28342	LBF.IG.50CW4	16025	LBF.IG.50CB4	16025
550	LBF.IG.55CG4	16531	LBF.IG.55CS4	31298	LBF.IG.55CW4	16531	LBF.IG.55CB4	18115
<i>C-height with Design Element; 40 Kg</i>								
500	LBF.ID.50CG4	15139	LBF.ID.50CS4	23944	LBF.ID.50CW4	15139	LBF.ID.50CB4	15139
550	LBF.ID.55CG4	15644	LBF.ID.55CS4	26900	LBF.ID.55CW4	15644	LBF.ID.55CB4	17228
<i>C-height with Gallery; 70 Kg</i>								
500	LBF.IG.50CG7	16816	LBF.IG.50CS7	29132	LBF.IG.50CW7	16816	LBF.IG.50CB7	16816
550	LBF.IG.55CG7	17321	LBF.IG.55CS7	32088	LBF.IG.55CW7	17321	LBF.IG.55CB7	18216
<i>C-height with Design Element; 70 Kg</i>								
500	LBF.ID.50CG7	15929	LBF.ID.50CS7	24735	LBF.ID.50CW7	15929	LBF.ID.50CB7	15929
550	LBF.ID.55CG7	16435	LBF.ID.55CS7	27691	LBF.ID.55CW7	16435	LBF.ID.55CB7	18019