



## FLUSH HANDLES

FOR WOODEN & GLASS SLIDING DOORS

## INTRODUCTION



The sophisticated technologies embedded into the sliding systems provide seamless movement to doors when enabled with flush handles. With the help of this small piece of hardware, operating your sliding doors becomes effortless and easy.

Häfele's Flush Handles perfectly subsume into your sliding doors, enhancing the overall aesthetics as well as providing them with integral functionality. Made of Stainless Steel 304 and available in Stainless Steel Polished and Matt finishes, these flush handles can be installed in entrance, internal partition and wardrobe sliding doors. They are available in multiple shapes and structures so that you can match the handles to the patterns/ designs of your wooden and glass doors.

## FEATURES

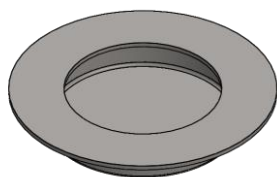
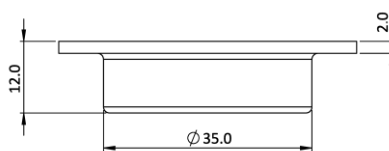
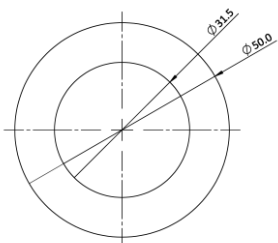
- Material: Stainless Steel 304
- Finish: Stainless Steel Matt / Stainless Steel Polished
- Available in different shapes and sizes

FLUSH HANDLES FOR WOODEN DOORS

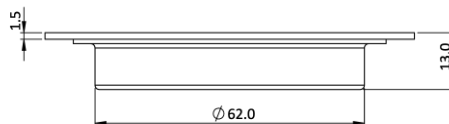
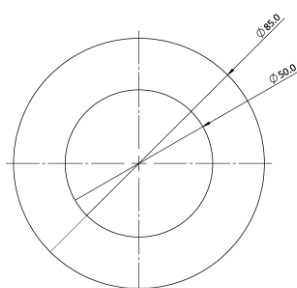
ROUND FLUSH HANDLE 902.01.400 (SS Matt) / 902.01.402 (SS Matt)



902.01.400  
Dimensions:  $\varnothing$  50 × 12 (D) mm



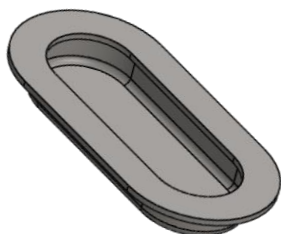
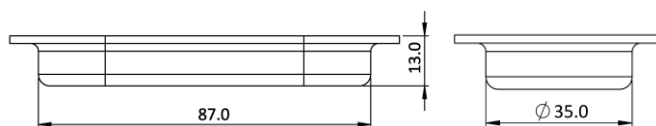
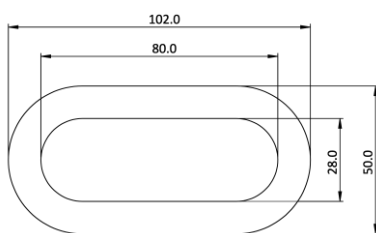
902.01.402  
Dimensions:  $\varnothing$  85 × 13 (D) mm



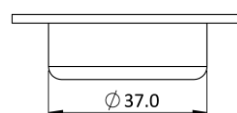
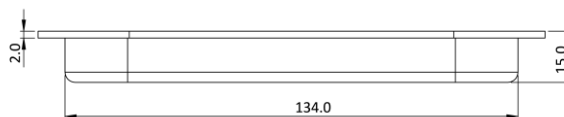
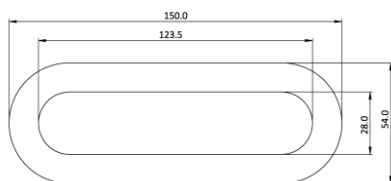
OVAL FLUSH HANDLE 902.01.410 (SS Matt) / 902.01.412 (SS Matt)



902.01.410  
Dimensions: 102 (H) × 50 (W) × 13 (D) mm



902.01.412  
Dimensions: 150 (H) × 54 (W) × 15 (D) mm

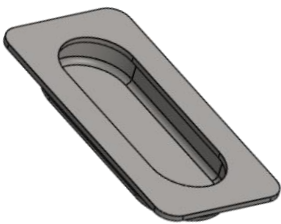
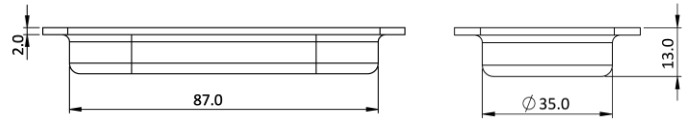
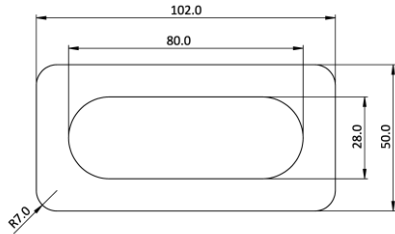


**FLUSH HANDLES FOR WOODEN DOORS**

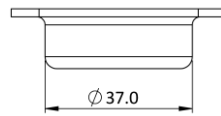
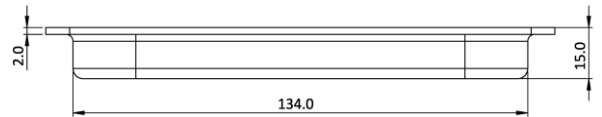
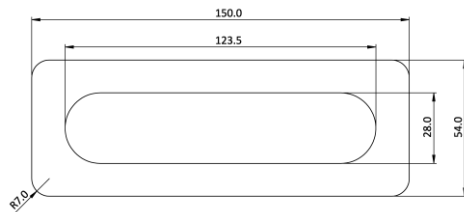
**RECTANGULAR FLUSH HANDLE WITH CURVED CORNERS 902.01.420 (SS Matt) / 902.01.422 (SS Matt)**



902.01.420  
Dimensions: 102 (H) × 50 (W) × 13 (D) mm



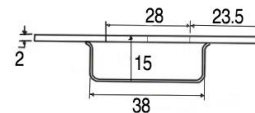
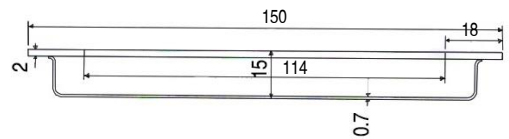
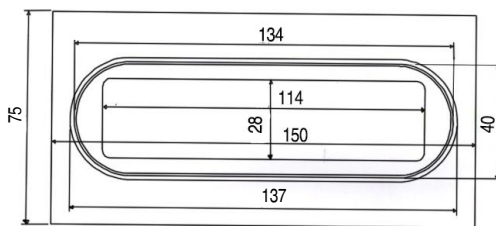
902.01.422  
Dimensions: 150 (H) × 54 (W) × 15 (D) mm



**RECTANGULAR FLUSH HANDLE WITH SQUARE CORNERS 902.01.430 (SS Matt)**



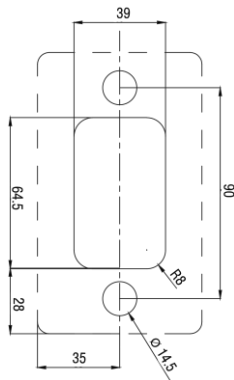
902.01.430  
Dimensions: 150 (H) × 75 (W) × 15 (D) mm



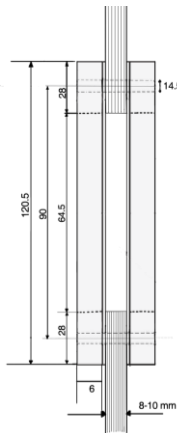
**FLUSH HANDLES FOR GLASS DOORS**

**RECTANGULAR FLUSH HANDLE 981.20.140 (SS Matt) / 981.20.141 (SS Polished)**

For glass thickness 10-12 mm  
 Dimensions: 120.5 (H) × 70 (W) mm



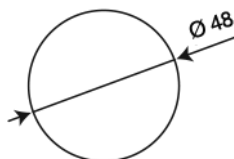
Glass Cut-out\*



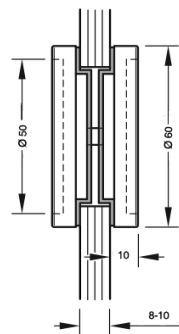
\* The glass door can be cut out in the centre of the handle for a complete grip or it can be sandwiched between the two parts of the handle

**ROUND FLUSH HANDLE 981.20.102 (SS Matt) / 981.52.531 (SS Polished)**

For glass thickness 8 - 10 mm  
 Dimensions: Ø 60 mm

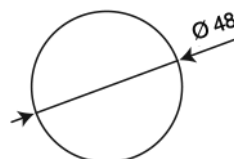


Glass Cut-out

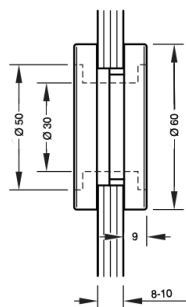


**ROUND FLUSH HANDLE 981.52.521 (SS Polished)**

For glass thickness 8 - 10 mm  
 Dimensions: Ø 60 mm

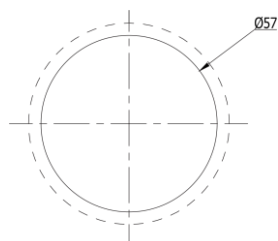


Glass Cut-out

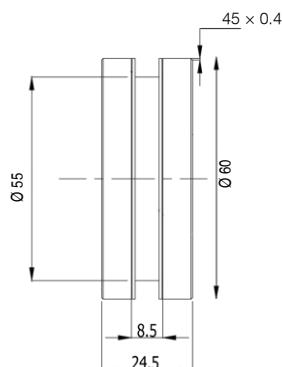


**ROUND FLUSH HANDLE 981.20.110 (SS Matt) / 981.20.112 (SS Polished)**

For glass thickness 8 mm  
 Dimensions: Ø 60 mm



Glass Cut-out



## ORDERING INFORMATION

Flush Handle	Article No.	Description	Finish	Qty
<b>WOODEN DOORS</b>				
	902.01.400	Round Flush Handle, $\varnothing 50 \times 12$ (D) mm	SS Matt	PC
	902.01.402	Round Flush Handle, $\varnothing 85 \times 12$ (D) mm	SS Matt	PC
	902.01.410	Oval Flush Handle, 102 (H) $\times$ 50 (W) $\times$ 13 (D) mm	SS Matt	PC
	902.01.412	Oval Flush Handle, 150 (H) $\times$ 54 (W) $\times$ 15 (D) mm	SS Matt	PC
	902.01.420	Rectangular Flush Handle with Curved Corners, 102 (H) $\times$ 50 (W) $\times$ 13 (D) mm	SS Matt	PC
	902.01.422	Rectangular Flush Handle with Curved Corners, 150 (H) $\times$ 54 (W) $\times$ 15 (D) mm	SS Matt	PC
	902.01.430	Rectangular Flush Handle with Square Corners, 150 (H) $\times$ 75 (W) $\times$ 15 (D) mm	SS Matt	PC
<b>GLASS DOORS</b>				
	981.20.140	Rectangular Flush Handle, 120.5 (H) $\times$ 70 (W) mm Glass Thickness 10-12 mm	SS Matt	PC
	981.20.141		SS Polished	PC
	981.20.102	Round Flush Handle, $\varnothing 60$ mm Glass Thickness 8-10 mm	SS Matt	PC
	981.52.531		SS Polished	PC
	981.52.521	Round Flush Handle, $\varnothing 60$ mm Glass Thickness 8-10 mm	SS Polished	PC
	981.20.110	Round Flush Handle, $\varnothing 60$ mm Glass Thickness 8 mm	SS Matt	PC
	981.20.112		SS Polished	PC

# HÄFELE

## Häfele India Private Limited

Office No. 3, Building "A", BETA, I Think  
Techno Campus, Off J.V.L.R, Opp.  
Kanjurmarg East, Mumbai – 400 042.  
**Phone:** 022 6142 6100 | **Fax:** 022 6702 0531.

New Delhi | Kolkata | Cochin | Chennai |  
Hyderabad | Bangalore | Mumbai | Pune |  
Ahmedabad | Srilanka | Bangladesh | Nepal |  
Bhutan | Maldives

Toll Free Customer Care No.: 1800 266 6667  
Customer Care WhatsApp No.: +91 9769111122  
SMS HAFELE to 56070  
info@hafeleindia.com  
customercare@hafeleindia.com

